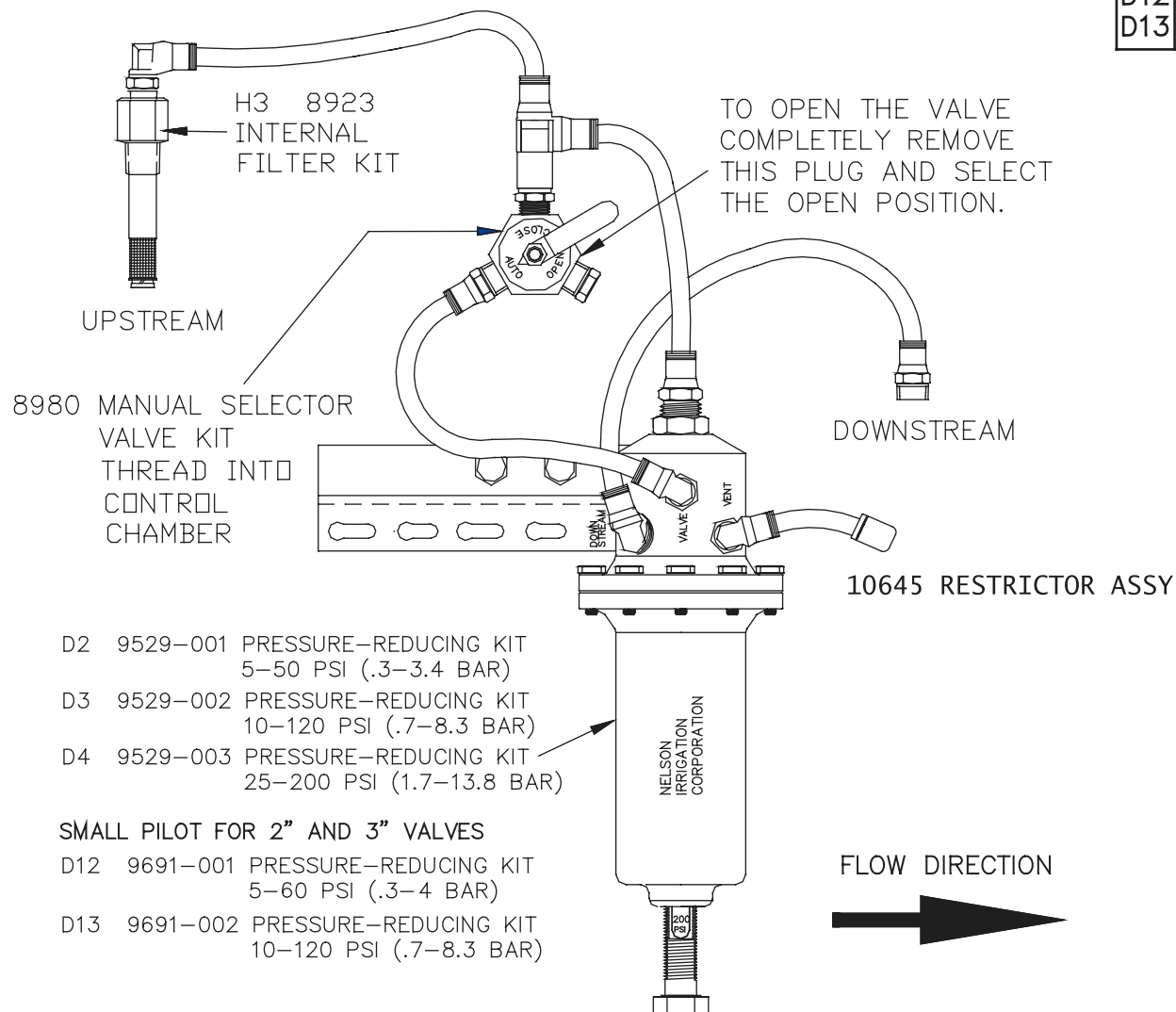


**PRESSURE REDUCING WITH INTERNAL FILTER**

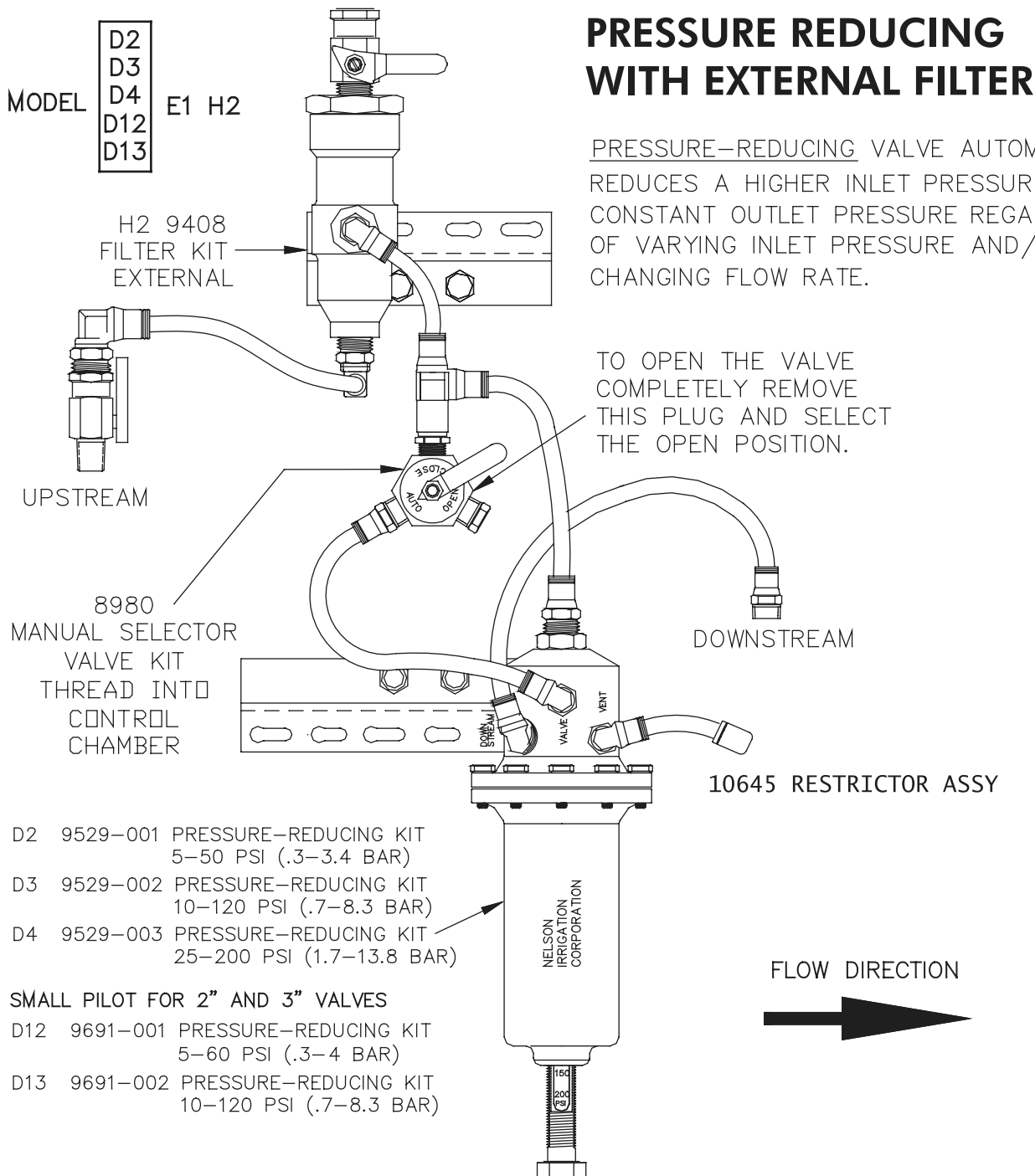
PRESSURE-REDUCING VALVE AUTOMATICALLY REDUCES A HIGHER INLET PRESSURE TO A CONSTANT OUTLET PRESSURE REGARDLESS OF VARYING INLET PRESSURE AND/OR CHANGING FLOW RATE.

MODEL E1 H3

D2
D3
D4
D12
D13



VALVE SIZE	TUBING SIZE	OPENING AND CLOSING SPEEDS		
		OPENING WITH #6 NOZ.	OPENING WITHOUT #6 NOZ.	CLOSING
2 INCH	1/4 INCH			
3 INCH	1/4 INCH	4 SEC (1-220 GPM)	3 SEC (1-220 GPM)	3 SEC (220-1 GPM)
4 INCH	1/4 INCH	4 SEC (1-300 GPM)	3 SEC (1-300 GPM)	3 SEC (300-1 GPM)
6 INCH	1/4 INCH	10 SEC (1-900 GPM)	4 SEC (1-900 GPM)	5 SEC (900-1 GPM)
8 INCH	3/8 INCH	36 SEC (1-1500 GPM)	10 SEC (1-1500 GPM)	15 SEC (1500-1 GPM)



- D2 9529-001 PRESSURE-REDUCING KIT  
5-50 PSI (.3-3.4 BAR)
  - D3 9529-002 PRESSURE-REDUCING KIT  
10-120 PSI (.7-8.3 BAR)
  - D4 9529-003 PRESSURE-REDUCING KIT  
25-200 PSI (1.7-13.8 BAR)
- SMALL PILOT FOR 2" AND 3" VALVES**
- D12 9691-001 PRESSURE-REDUCING KIT  
5-60 PSI (.3-4 BAR)
  - D13 9691-002 PRESSURE-REDUCING KIT  
10-120 PSI (.7-8.3 BAR)

VALVE SIZE	TUBING SIZE	OPENING AND CLOSING SPEEDS		
		OPENING WITH #6 NOZ.	OPENING WITHOUT #6 NOZ.	CLOSING
2 INCH	1/4 INCH			
3 INCH	1/4 INCH	4 SEC (1-220 GPM)	3 SEC (1-220 GPM)	4 SEC (220-1 GPM)
4 INCH	1/4 INCH	4 SEC (1-300 GPM)	3 SEC (1-300 GPM)	4 SEC (300-1 GPM)
6 INCH	1/4 INCH	10 SEC (1-900 GPM)	4 SEC (1-900 GPM)	6 SEC (900-1 GPM)
8 INCH	3/8 INCH	36 SEC (1-1500 GPM)	10 SEC (1-1500 GPM)	16 SEC (1500-1 GPM)

## PRESSURE REDUCING WITH SOLENOID & INTERNAL FILTER

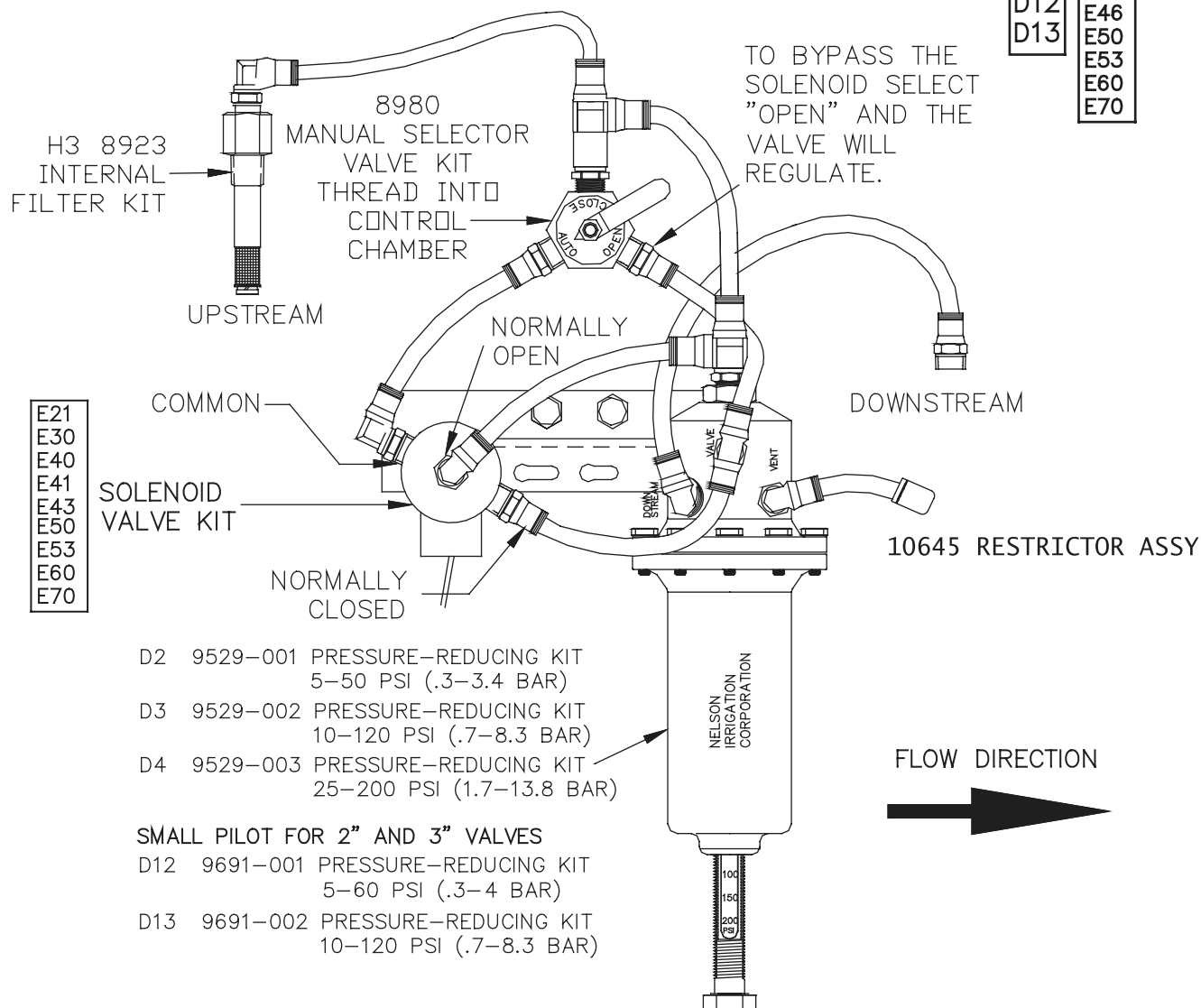
PRESSURE-REDUCING VALVE AUTOMATICALLY REDUCES A HIGHER INLET PRESSURE TO A CONSTANT OUTLET PRESSURE REGARDLESS OF VARYING INLET PRESSURE AND/OR CHANGING FLOW RATE.

SOLENOID CONTROL IS PROVIDED TO INTERCEPT THE OPERATION OF THE PRESSURE REDUCING CONTROL AND CLOSE THE MAIN VALVE.

MODEL

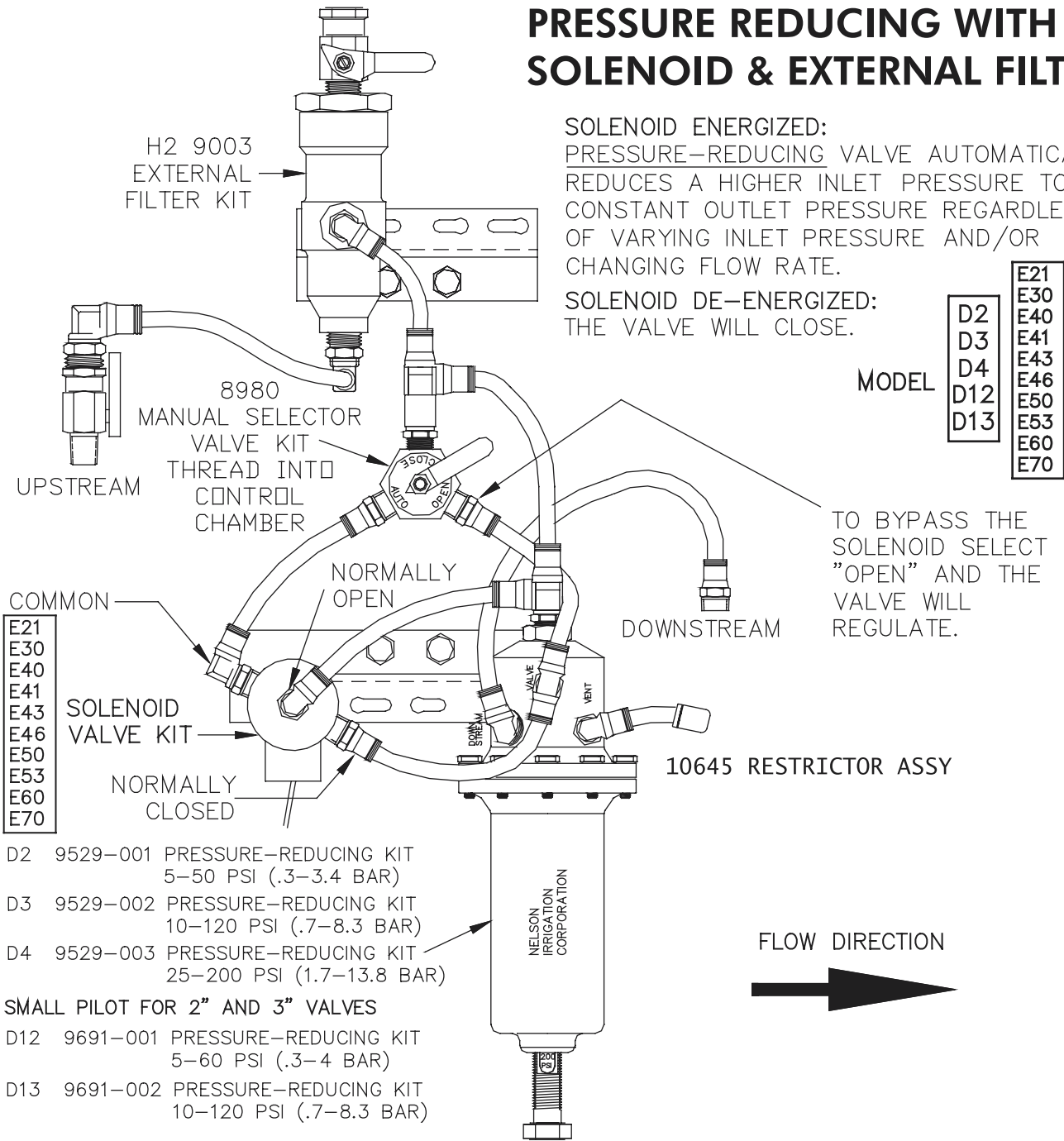
D2	E21
D3	E30
D4	E40
D12	E41
D13	E43
	E46
	E50
	E53
	E60
	E70

H3



VALVE SIZE	TUBING SIZE	OPENING AND CLOSING SPEEDS		
		OPENING WITH #6 NOZ.	OPENING WITHOUT #6 NOZ.	CLOSING
2 INCH	1/4 INCH			
3 INCH	1/4 INCH	4 SEC (1-220 GPM)	3 SEC (1-220 GPM)	7 SEC (1-220 GPM)
4 INCH	1/4 INCH	5 SEC (1-300 GPM)	4 SEC (1-300 GPM)	10 SEC (1-300 GPM)
6 INCH	1/4 INCH	23 SEC (1-900 GPM)	9 SEC (1-900 GPM)	40 SEC (1-900 GPM)
8 INCH	1/4 INCH	44 SEC (1-1500 GPM)	12 SEC (1-1500 GPM)	124 SEC (1-1500 GPM)

### PRESSURE REDUCING WITH SOLENOID & EXTERNAL FILTER



**SOLENOID ENERGIZED:**  
 PRESSURE-REDUCING VALVE AUTOMATICALLY REDUCES A HIGHER INLET PRESSURE TO A CONSTANT OUTLET PRESSURE REGARDLESS OF VARYING INLET PRESSURE AND/OR CHANGING FLOW RATE.

**SOLENOID DE-ENERGIZED:**  
 THE VALVE WILL CLOSE.

- MODEL
- D2
  - D3
  - D4
  - D12
  - D13
- H2
- E21
  - E30
  - E40
  - E41
  - E43
  - E46
  - E50
  - E53
  - E60
  - E70

- E21
  - E30
  - E40
  - E41
  - E43
  - E46
  - E50
  - E53
  - E60
  - E70
- D2 9529-001 PRESSURE-REDUCING KIT  
 5-50 PSI (.3-3.4 BAR)
- D3 9529-002 PRESSURE-REDUCING KIT  
 10-120 PSI (.7-8.3 BAR)
- D4 9529-003 PRESSURE-REDUCING KIT  
 25-200 PSI (1.7-13.8 BAR)
- SMALL PILOT FOR 2" AND 3" VALVES**
- D12 9691-001 PRESSURE-REDUCING KIT  
 5-60 PSI (.3-4 BAR)
- D13 9691-002 PRESSURE-REDUCING KIT  
 10-120 PSI (.7-8.3 BAR)

FLOW DIRECTION

VALVE SIZE	TUBING SIZE	OPENING AND CLOSING SPEEDS		
		OPENING WITH #6 NOZ.	OPENING WITHOUT #6 NOZ.	CLOSING
2 INCH	1/4 INCH			
3 INCH	1/4 INCH	4 SEC (1-220 GPM)	3 SEC (1-220 GPM)	9 SEC (220-1 GPM)
4 INCH	1/4 INCH	5 SEC (1-300 GPM)	4 SEC (1-300 GPM)	11 SEC (300-1 GPM)
6 INCH	1/4 INCH	23 SEC (1-900 GPM)	9 SEC (1-900 GPM)	48 SEC (900-1 GPM)
8 INCH	1/4 INCH	44 SEC (1-1500 GPM)	12 SEC (1-1500 GPM)	156 SEC (1500-1 GPM)

**SOLENOID ENERGIZED:**  
 PRESSURE-REDUCING VALVE AUTOMATICALLY  
 REDUCES A HIGHER INLET PRESSURE TO A  
 CONSTANT OUTLET PRESSURE REGARDLESS  
 OF VARYING INLET PRESSURE AND/OR  
 CHANGING FLOW RATE.

**SOLENOID DE-ENERGIZED:**  
 THE VALVE WILL CLOSE.

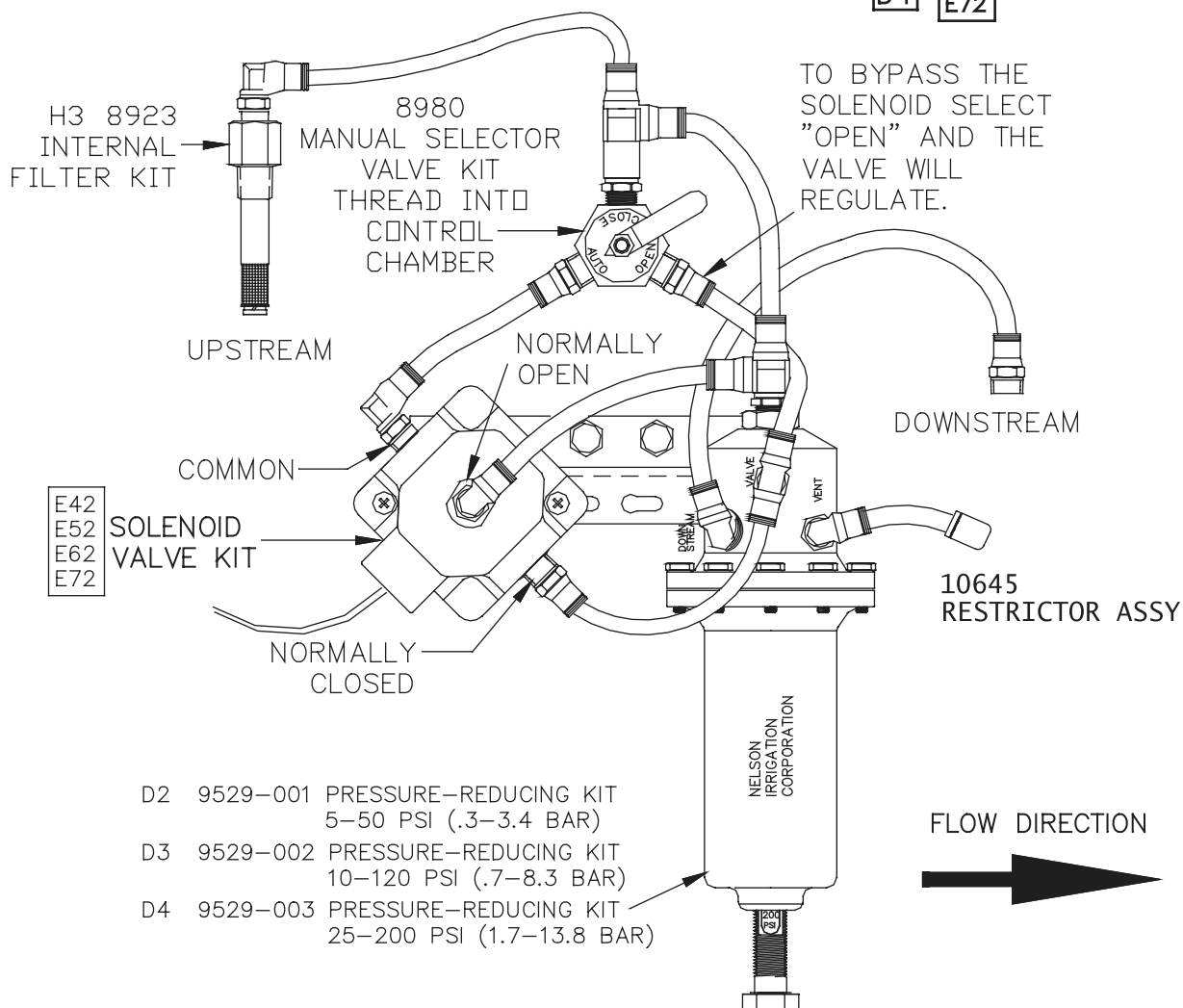
## PRESSURE REDUCING WITH LARGE SOLENOID & INTERNAL FILTER

MODEL 

D2
D3
D4

E42
E52
E62
E72

 H3



THE LARGE SOLENOID PORTS ALLOW THE PRESSURE CONTROL TO QUICKLY OPEN AND CLOSE THE MAIN VALVE AS REQUIRED TO MAINTAIN DOWNSTREAM PRESSURE.

THE TWO-, THREE-, AND FOUR-INCH VALVE RESPOND FAST ENOUGH WITH THE SMALLER SOLENOID.

VALVE SIZE	TUBING SIZE	OPENING AND CLOSING SPEEDS		
		OPENING WITH #6 NOZ.	OPENING WITHOUT #6 NOZ.	CLOSING
6 INCH	1/4 INCH	13 SEC (1-900 GPM)	5 SEC (1-900 GPM)	6 SEC (900-1 GPM)
8 INCH	3/8 INCH	36 SEC (1-1500 GPM)	10 SEC (1-1500 GPM)	20 SEC (1500-1 GPM)

## PRESSURE REDUCING WITH LARGE SOLENOID & EXTERNAL FILTER

**SOLENOID ENERGIZED:**  
 PRESSURE-REDUCING VALVE AUTOMATICALLY  
 REDUCES A HIGHER INLET PRESSURE TO A  
 CONSTANT OUTLET PRESSURE REGARDLESS  
 OF VARYING INLET PRESSURE AND/OR  
 CHANGING FLOW RATE.

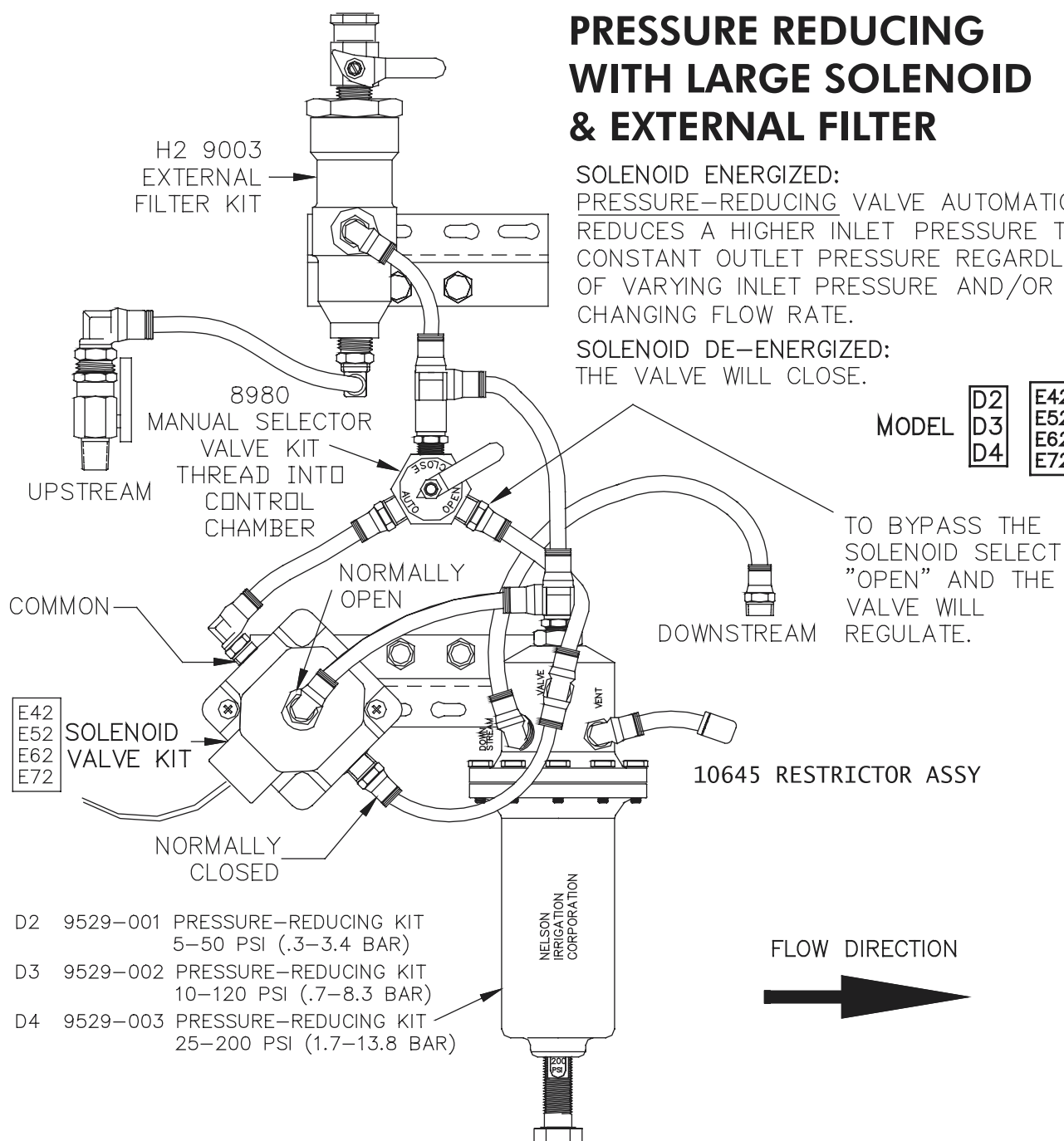
**SOLENOID DE-ENERGIZED:**  
 THE VALVE WILL CLOSE.

MODEL 

D2
D3
D4

E42
E52
E62
E72

 H2



TO BYPASS THE  
SOLENOID SELECT  
"OPEN" AND THE  
VALVE WILL  
REGULATE.

- D2 9529-001 PRESSURE-REDUCING KIT  
5-50 PSI (.3-3.4 BAR)
- D3 9529-002 PRESSURE-REDUCING KIT  
10-120 PSI (.7-8.3 BAR)
- D4 9529-003 PRESSURE-REDUCING KIT  
25-200 PSI (1.7-13.8 BAR)

THE LARGE SOLENOID PORTS ALLOW THE PRESSURE CONTROL TO QUICKLY OPEN AND CLOSE THE MAIN VALVE AS REQUIRED TO MAINTAIN DOWNSTREAM PRESSURE.

THE TWO-, THREE-, AND FOUR-INCH VALVE RESPOND FAST ENOUGH WITH THE SMALLER SOLENOID.

VALVE SIZE	TUBING SIZE	OPENING AND CLOSING SPEEDS		
		OPENING WITH #6 NOZ.	OPENING WITHOUT #6 NOZ.	CLOSING
6 INCH	1/4 INCH	13 SEC (1-900 GPM)	5 SEC (1-900 GPM)	8 SEC (900-1 GPM)
8 INCH	3/8 INCH	36 SEC (1-1500 GPM)	10 SEC (1-1500 GPM)	25 SEC (1500-1 GPM)

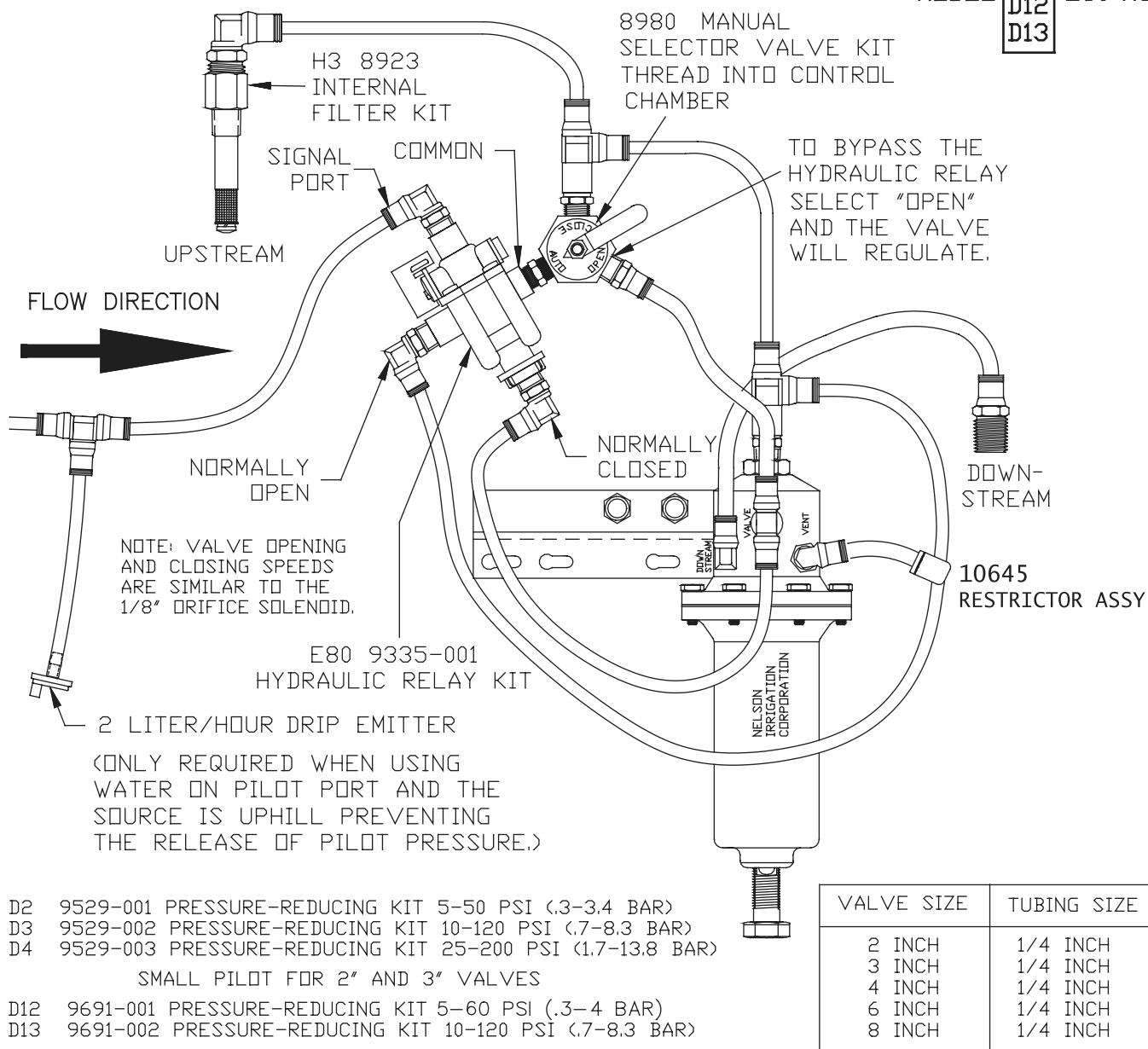
## PRESSURE REDUCING WITH HYDRAULIC RELAY & INTERNAL FILTER

HYDRAULIC RELAY PRESSURIZED AT SIGNAL PORT: PRESSURE-REDUCING VALVE AUTOMATICALLY REDUCES A HIGHER INLET PRESSURE TO A CONSTANT OUTLET PRESSURE REGARDLESS OF VARYING INLET PRESSURE AND/OR CHANGING FLOW RATE.

HYDRAULIC RELAY NOT PRESSURIZED AT SIGNAL PORT: VALVE WILL CLOSE.

NOTE: SIGNAL PORT PRESSURE MUST BE EQUAL TO OR GREATER THAN UPSTREAM PRESSURE IN ORDER TO ACTIVATE HYDRAULIC RELAY CORRECTLY.

MODEL D2  
D3  
D4  
D12  
D13 E80 H3



D2 9529-001 PRESSURE-REDUCING KIT 5-50 PSI (.3-3.4 BAR)  
 D3 9529-002 PRESSURE-REDUCING KIT 10-120 PSI (.7-8.3 BAR)  
 D4 9529-003 PRESSURE-REDUCING KIT 25-200 PSI (1.7-13.8 BAR)

SMALL PILOT FOR 2" AND 3" VALVES

D12 9691-001 PRESSURE-REDUCING KIT 5-60 PSI (.3-4 BAR)  
 D13 9691-002 PRESSURE-REDUCING KIT 10-120 PSI (.7-8.3 BAR)

## PRESSURE REDUCING WITH HYDRAULIC RELAY/SOLENOID & INTERNAL FILTER

SOLENOID ENERGIZED: PRESSURE-REDUCING VALVE AUTOMATICALLY REDUCES A HIGHER INLET PRESSURE TO A CONSTANT OUTLET PRESSURE REGARDLESS OF VARYING INLET PRESSURE AND/OR CHANGING FLOW RATE.

SOLENOID DE-ENERGIZED: THE VALVE WILL CLOSE.

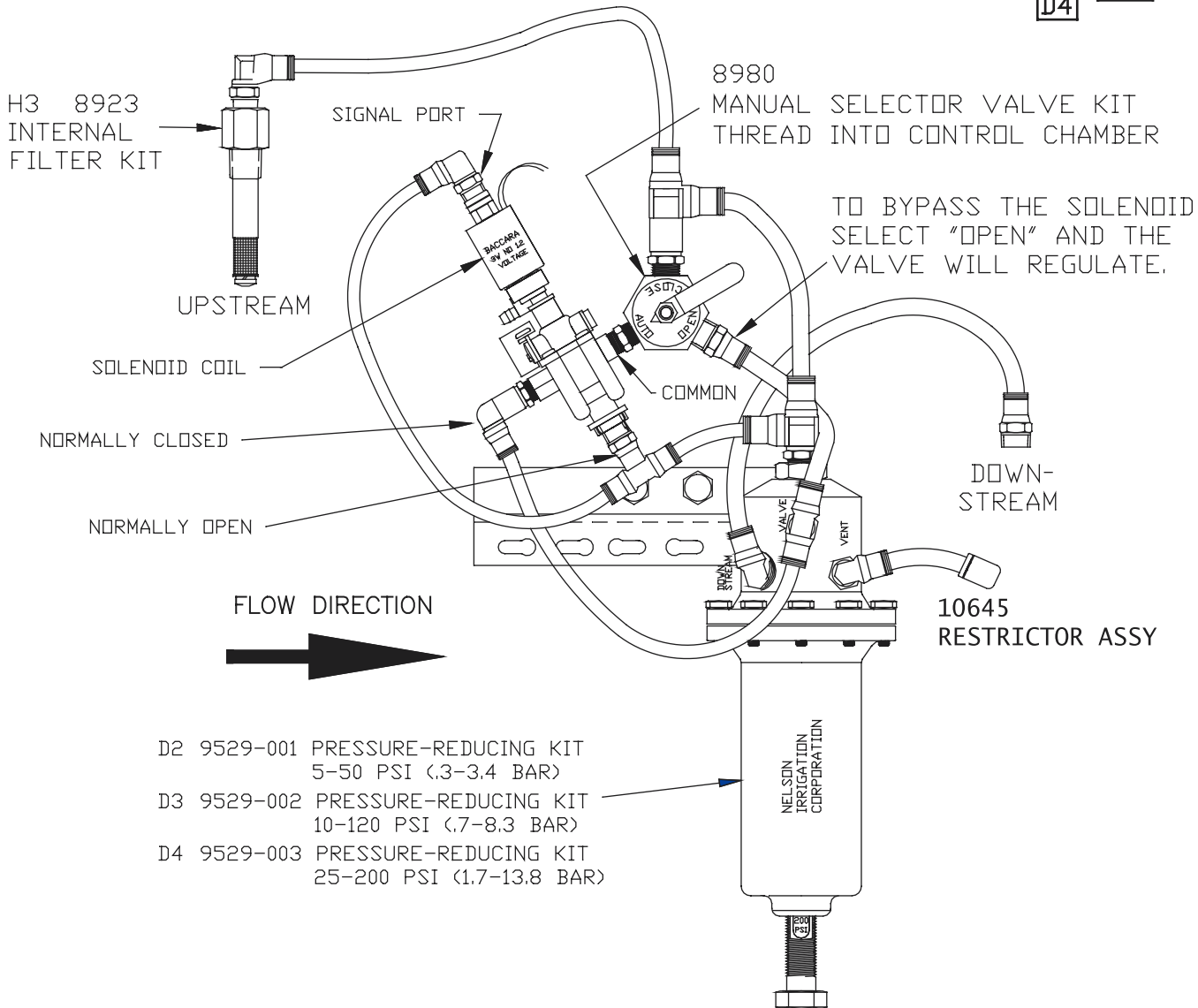
**FAST RESPONSE FOR 6" & 8" SIZE VALVES**

MODEL

D2  
D3  
D4

E24  
E45

H3



VALVE SIZE	TUBING SIZE	OPENING AND CLOSING SPEEDS		
		OPENING WITH #6 NOZ.	OPENING WITHOUT #6 NOZ.	CLOSING
6 INCH	1/4 INCH	13 SEC (1-900 GPM)	5 SEC (1-900 GPM)	6 SEC (900-1 GPM)
8 INCH	3/8 INCH	36 SEC (1-1500 GPM)	10 SEC (1-1500 GPM)	20 SEC (1500-1 GPM)