

RATE-OF-FLOW WITH EXTERNAL FILTER

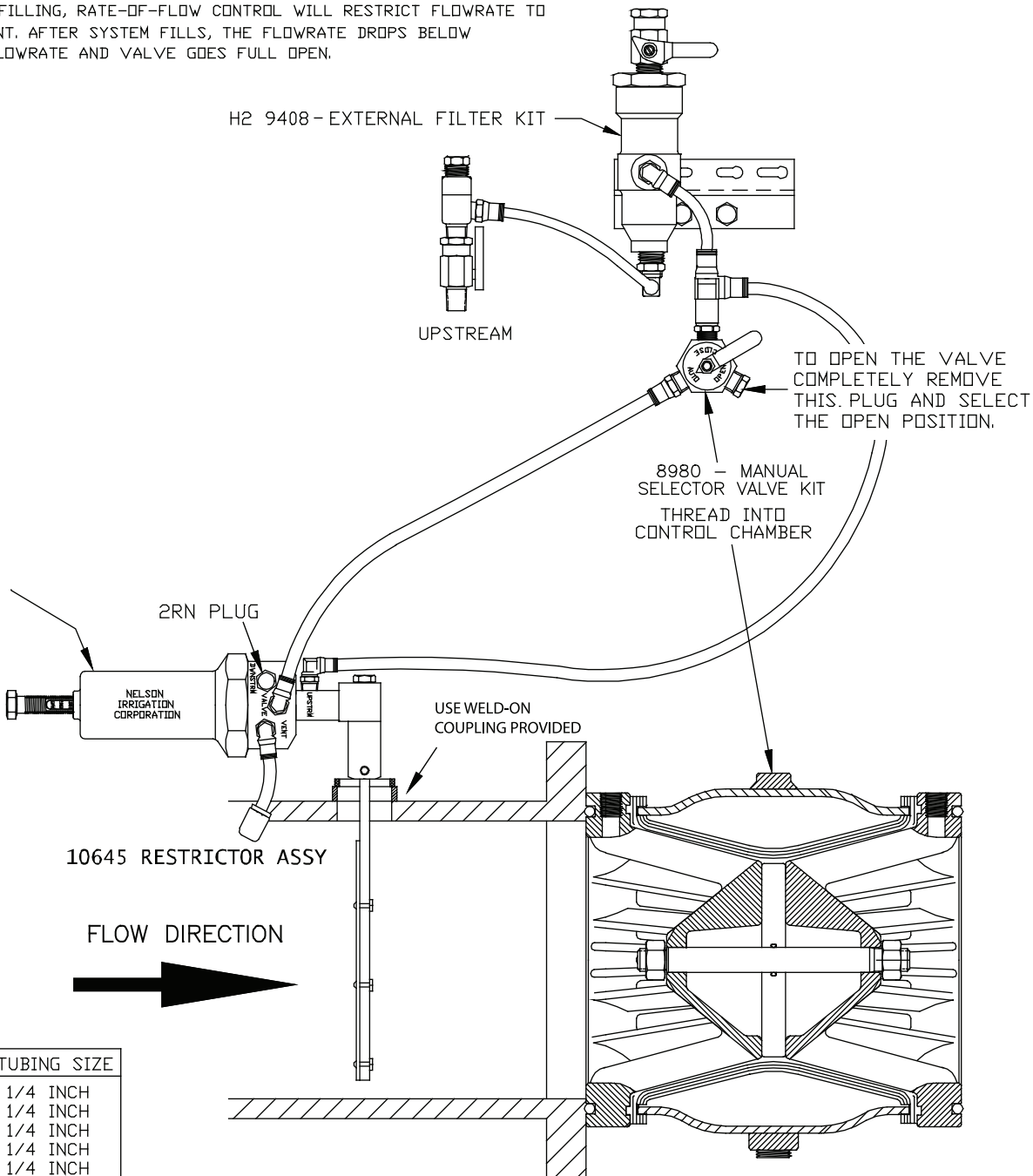
RATE-OF-FLOW CONTROL LIMITS THE FLOW RATE PASSING THROUGH THE VALVE.
RATE-OF-FLOW CONTROL IS SET TO 100% OF SYSTEM FLOW RATE USAGE.
DURING SYSTEM FILLING, RATE OF FLOW WILL RESTRICT FLOWRATE TO
DESIRED SETPOINT. AFTER SYSTEM FILLS, THE FLOWRATE WILL CONTINUE
TO SUPPLY THE SYSTEM WITH THE SAME DESIRED SETPOINT GPM.

MODEL D18 E1 H2

OR

RATE-OF-FLOW CONTROL IS SET TO 110-120% OF SYSTEM FLOW RATE USAGE.
DURING SYSTEM FILLING, RATE-OF-FLOW CONTROL WILL RESTRICT FLOWRATE TO
DESIRED SETPOINT. AFTER SYSTEM FILLS, THE FLOWRATE DROPS BELOW
DESIRED FILL FLOWRATE AND VALVE GOES FULL OPEN.

- D18 9778-001 8" RATE-OF-FLOW CONTROL REMOTE(900-3800 GPM)
- D18 9778-002 8" RATE-OF-FLOW CONTROL IN-VAL VEC(900-3800 GPM)
- D18 9778-003 6" RATE-OF-FLOW CONTROL REMOTE(500-2000 GPM)
- D18 9778-004 6" RATE-OF-FLOW CONTROL IN-VAL VEC(500-2000 GPM)
- D18 9778-005 3" RATE-OF-FLOW CONTROL REMOTE(120-400 GPM)
- D18 9778-006 4" RATE-OF-FLOW LD-FLO CONTROL REMOTE(200-540 GPM)
- D18 9778-007 6" RATE-OF-FLOW LD-FLO CONTROL REMOTE(330-1010 GPM)
- D18 9778-008 8" RATE-OF-FLOW LD-FLO CONTROL REMOTE(490-1530 GPM)



VALVE SIZE	TUBING SIZE
2 INCH	1/4 INCH
3 INCH	1/4 INCH
4 INCH	1/4 INCH
6 INCH	1/4 INCH
8 INCH	1/4 INCH

RATE-OF-FLOW WITH SOLENOID & EXTERNAL FILTER

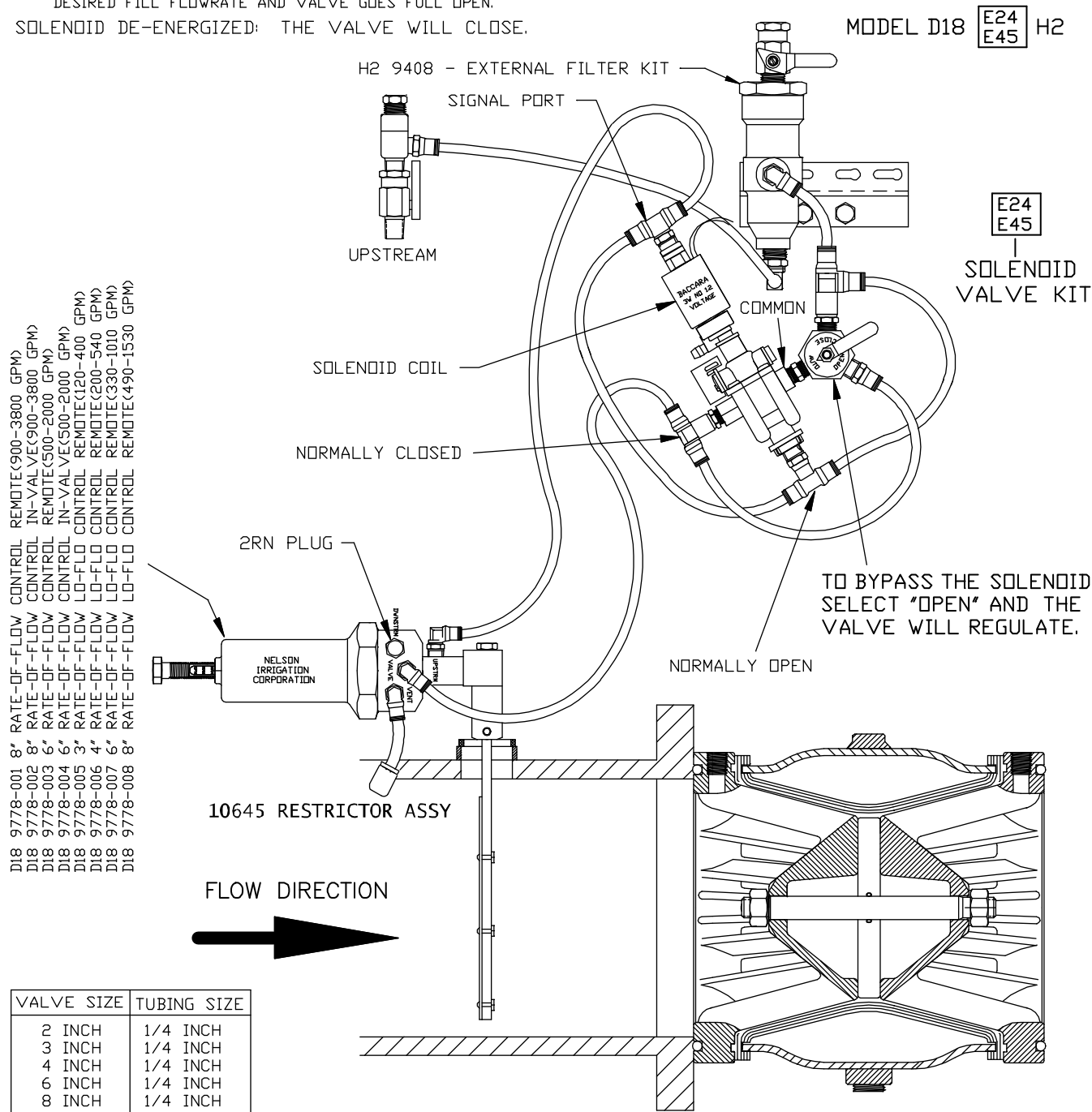
SOLENOID ENERGIZED:

RATE-OF-FLOW CONTROL LIMITS THE FLOW RATE PASSING THROUGH THE VALVE. RATE-OF-FLOW CONTROL IS SET TO 100% OF SYSTEM FLOW RATE USAGE. DURING SYSTEM FILLING, RATE-OF-FLOW CONTROL WILL RESTRICT FLOWRATE TO DESIRED SETPOINT. AFTER SYSTEM FILLS, THE FLOWRATE WILL CONTINUE TO SUPPLY THE SYSTEM WITH THE SAME DESIRED SETPOINT GPM.

OR

RATE-OF-FLOW CONTROL IS SET TO 110-120% OF SYSTEM FLOW RATE USAGE. DURING SYSTEM FILLING, RATE OF FLOW WILL RESTRICT FLOWRATE TO DESIRED SETPOINT. AFTER SYSTEM FILLS, THE FLOWRATE DROPS BELOW DESIRED FILL FLOWRATE AND VALVE GOES FULL OPEN.

SOLENOID DE-ENERGIZED: THE VALVE WILL CLOSE.

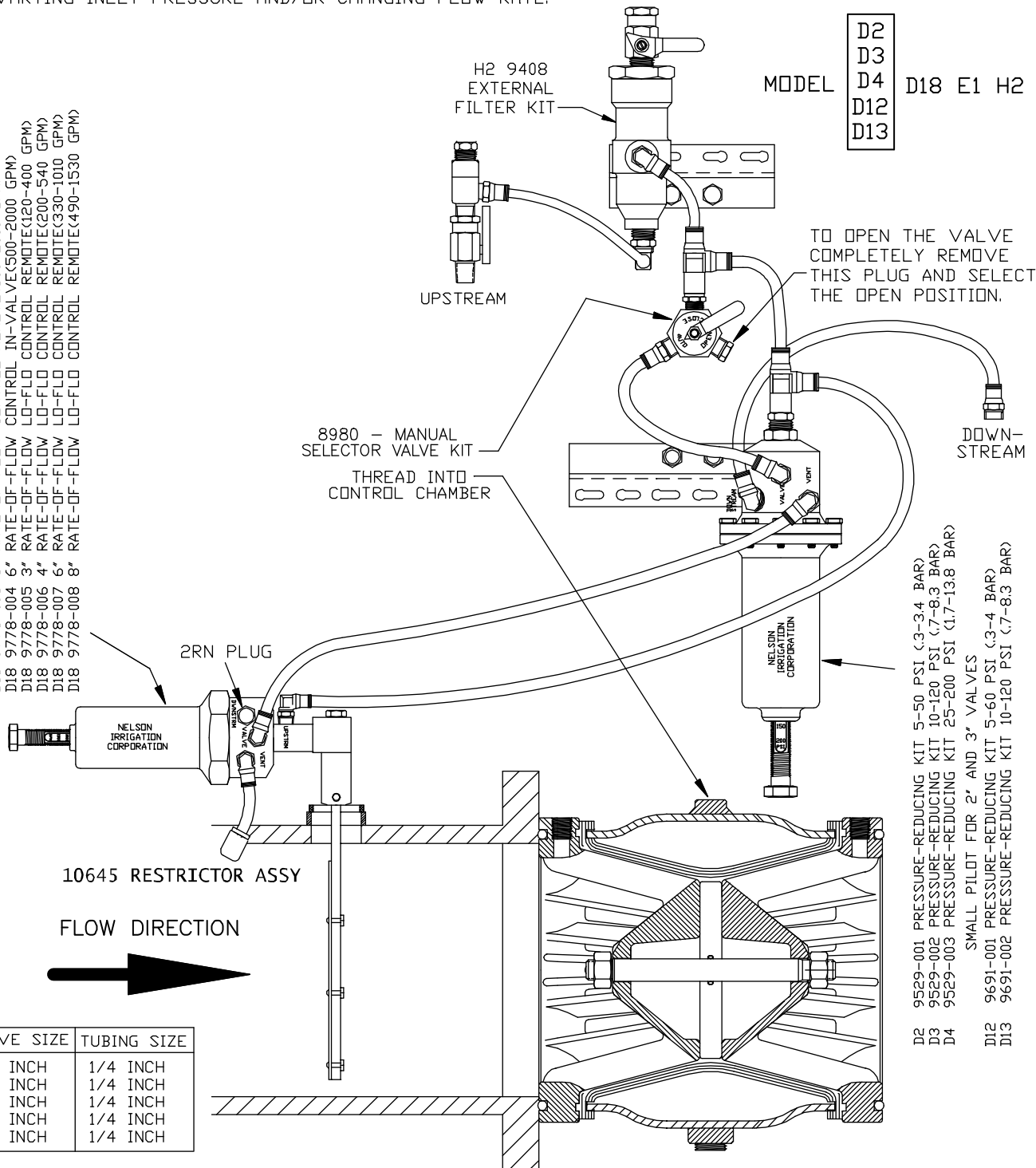


- D18 9778-001 8" RATE-OF-FLOW CONTROL REMDTE<900-3800 GPM>
- D18 9778-002 8" RATE-OF-FLOW CONTROL IN-VALVE<900-3800 GPM>
- D18 9778-003 6" RATE-OF-FLOW CONTROL REMDTE<500-2000 GPM>
- D18 9778-004 6" RATE-OF-FLOW CONTROL IN-VALVE<500-2000 GPM>
- D18 9778-005 3" RATE-OF-FLOW CONTROL REMDTE<120-400 GPM>
- D18 9778-006 4" RATE-OF-FLOW CONTROL REMDTE<200-540 GPM>
- D18 9778-007 6" RATE-OF-FLOW CONTROL REMDTE<330-1010 GPM>
- D18 9778-008 8" RATE-OF-FLOW CONTROL REMDTE<490-1530 GPM>

RATE-OF-FLOW & PRESSURE REDUCING WITH EXTERNAL FILTER

RATE-OF-FLOW CONTROL LIMITS THE FLOW RATE PASSING THROUGH THE VALVE. RATE-OF-FLOW CONTROL IS SET TO 110-120% ABOVE SYSTEM FLOW RATE. DURING SYSTEM FILLING, RATE-OF-FLOW CONTROL WILL RESTRICT FLOWRATE TO DESIRED SETPOINT. AS DOWNSTREAM PRESSURE RISES TO PRESSURE REDUCING SETTING, THE CONTROL AUTOMATICALLY SHIFTS TO PRESSURE REDUCING REGULATOR TO HOLD A CONSTANT OUTLET PRESSURE REGARDLESS OF VARYING INLET PRESSURE AND/OR CHANGING FLOW RATE.

- D18 9778-001 8" RATE-OF-FLOW CONTROL REMDTE(900-3800 GPM)
- D18 9778-002 8" RATE-OF-FLOW CONTROL IN-VALVE(900-3800 GPM)
- D18 9778-003 6" RATE-OF-FLOW CONTROL REMDTE(500-2000 GPM)
- D18 9778-004 6" RATE-OF-FLOW CONTROL IN-VALVE(500-2000 GPM)
- D18 9778-005 3" RATE-OF-FLOW LD-FLO CONTROL REMDTE(120-400 GPM)
- D18 9778-006 4" RATE-OF-FLOW LD-FLO CONTROL REMDTE(200-540 GPM)
- D18 9778-007 6" RATE-OF-FLOW LD-FLO CONTROL REMDTE(330-1010 GPM)
- D18 9778-008 8" RATE-OF-FLOW LD-FLO CONTROL REMDTE(490-1530 GPM)



- D2
- D3
- D4
- D12
- D13

MODEL D18 E1 H2

TO OPEN THE VALVE COMPLETELY REMOVE THIS PLUG AND SELECT THE OPEN POSITION.

- D2 9529-001 PRESSURE-REDUCING KIT 5-50 PSI (.3-3.4 BAR)
- D3 9529-002 PRESSURE-REDUCING KIT 10-120 PSI (.7-8.3 BAR)
- D4 9529-003 PRESSURE-REDUCING KIT 25-200 PSI (1.7-13.8 BAR)
- SMALL PILOT FOR 2" AND 3" VALVES
- D12 9691-001 PRESSURE-REDUCING KIT 5-60 PSI (.3-4 BAR)
- D13 9691-002 PRESSURE-REDUCING KIT 10-120 PSI (.7-8.3 BAR)

VALVE SIZE	TUBING SIZE
2 INCH	1/4 INCH
3 INCH	1/4 INCH
4 INCH	1/4 INCH
6 INCH	1/4 INCH
8 INCH	1/4 INCH

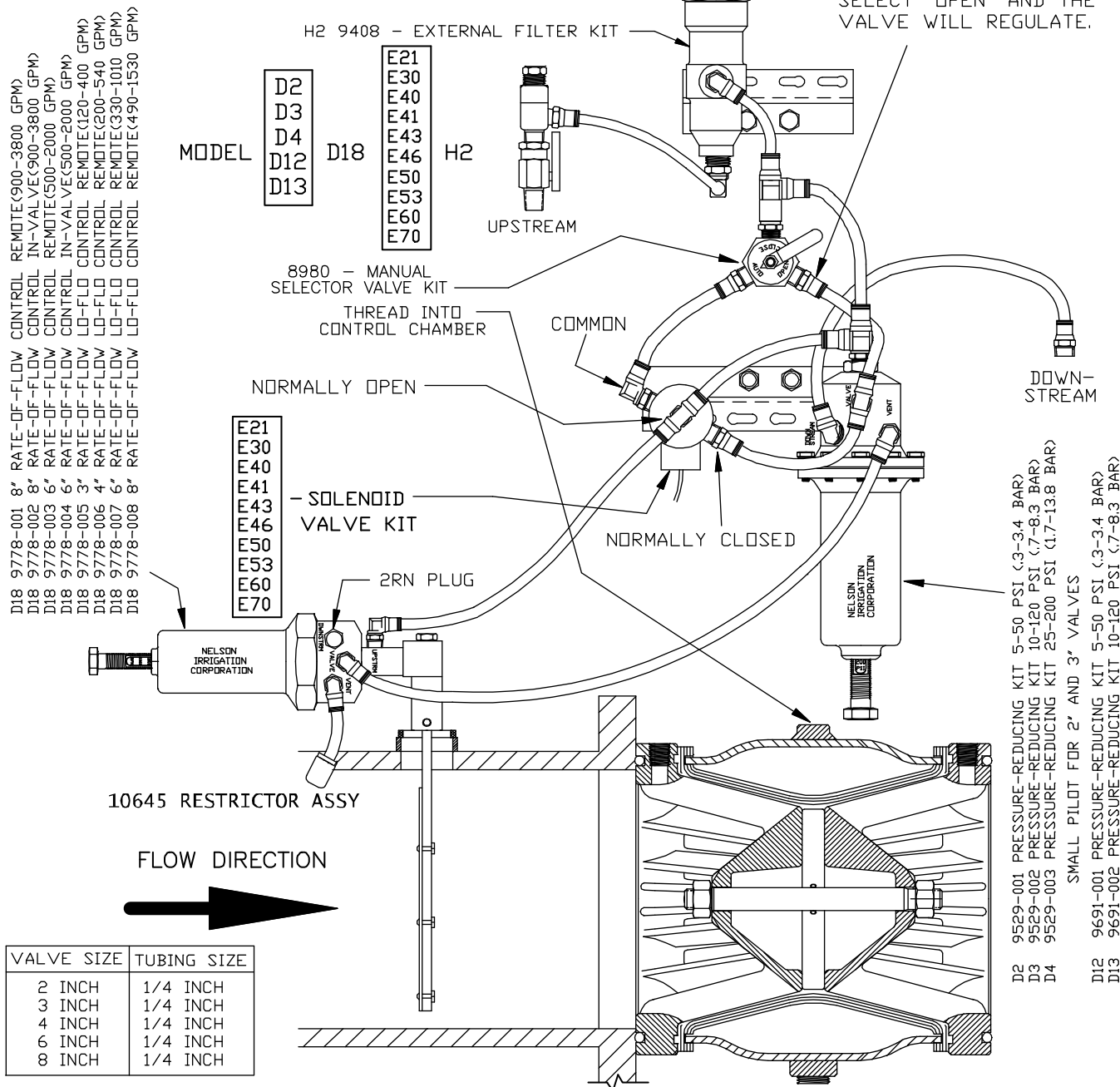
RATE-OF-FLOW & PRESSURE REDUCING WITH SOLENOID & EXTERNAL FILTER

SOLENOID ENERGIZED:

RATE-OF-FLOW CONTROL LIMITS THE FLOW RATE PASSING THROUGH THE VALVE. RATE-OF-FLOW CONTROL IS SET TO 110-120% ABOVE SYSTEM FLOW RATE. DURING SYSTEM FILLING, RATE-OF-FLOW CONTROL WILL RESTRICT FLOWRATE TO DESIRED SETPOINT. AS DOWNSTREAM PRESSURE RISES TO PRESSURE REDUCING SETTING, THE CONTROL AUTOMATICALLY SHIFTS TO PRESSURE REDUCING REGULATOR TO HOLD A CONSTANT OUTLET PRESSURE REGARDLESS OF VARYING INLET PRESSURE AND/OR CHANGING FLOW RATE.

SOLENOID DE-ENERGIZED: THE VALVE WILL CLOSE.

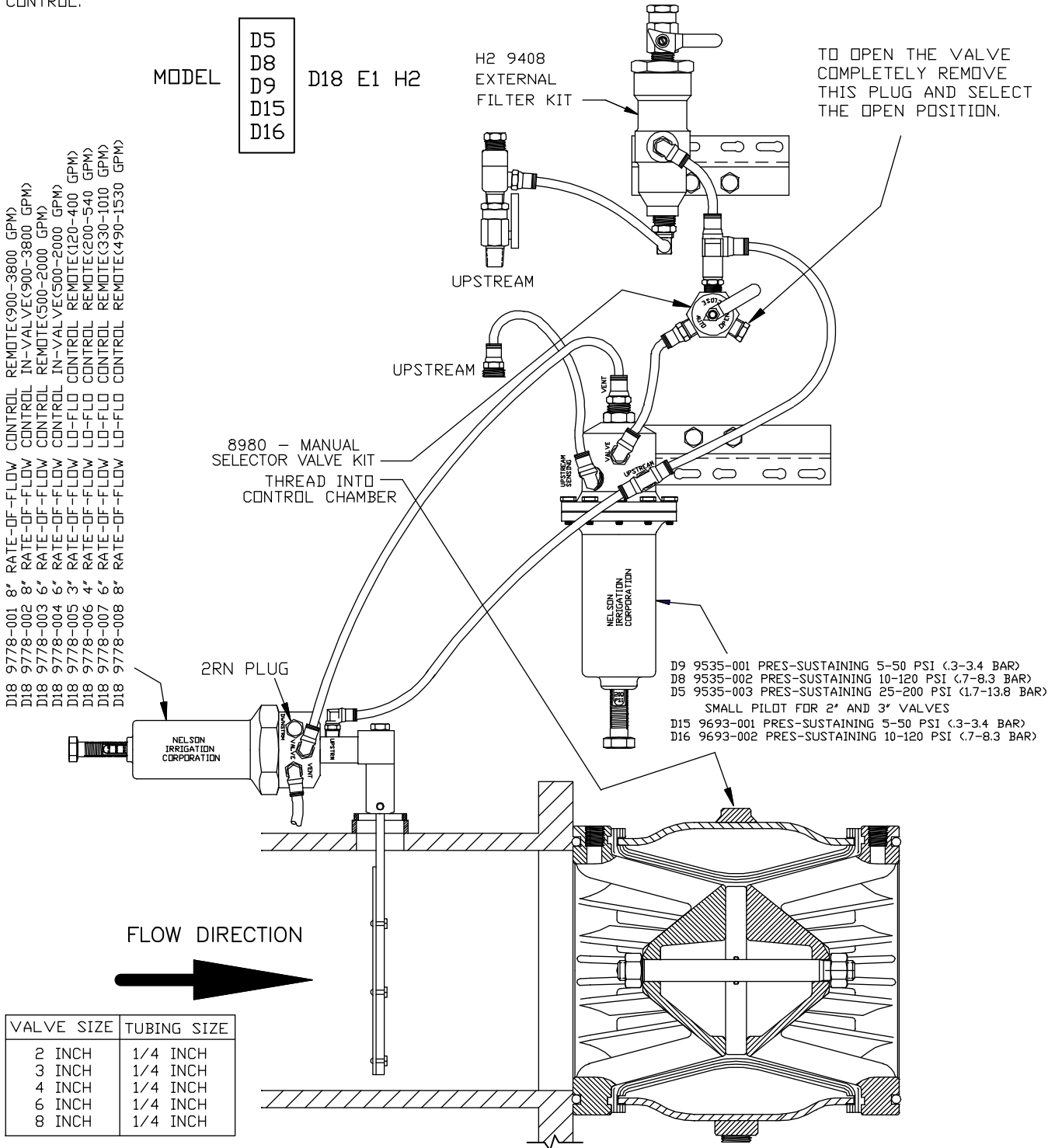
TO BYPASS THE SOLENOID SELECT "OPEN" AND THE VALVE WILL REGULATE.



VALVE SIZE	TUBING SIZE
2 INCH	1/4 INCH
3 INCH	1/4 INCH
4 INCH	1/4 INCH
6 INCH	1/4 INCH
8 INCH	1/4 INCH

**RATE-OF-FLOW & PRESSURE
SUSTAINING WITH EXTERNAL FILTER**

RATE-OF-FLOW CONTROL LIMITS THE FLOW RATE PASSING THROUGH THE VALVE.
RATE-OF-FLOW CONTROL IS SET TO MAXIMUM FLOW RATE DESIRED THROUGH THE VALVE.
PRESSURE SUSTAINING ACCURATELY MAINTAINS A CONSTANT, PRESET, UPSTREAM PRESSURE
BY DISCHARGING WATER AS REQUIRED UP TO THE MAXIMUM FLOWRATE SET ON RATE-OF-FLOW
CONTROL.



RATE-OF-FLOW WITH SOLENOID & EXTERNAL FILTER

SOLENOID ENERGIZED:

RATE-OF-FLOW CONTROL LIMITS THE FLOW RATE PASSING THROUGH THE VALVE. RATE-OF-FLOW CONTROL IS SET TO 100% OF SYSTEM FLOW RATE USAGE. DURING SYSTEM FILLING, RATE-OF-FLOW CONTROL WILL RESTRICT FLOWRATE TO DESIRED SETPOINT. AFTER SYSTEM FILLS, THE FLOWRATE WILL CONTINUE TO SUPPLY THE SYSTEM WITH THE SAME DESIRED SETPOINT GPM.

OR

RATE-OF-FLOW CONTROL IS SET TO 110-120% OF SYSTEM FLOW RATE USAGE. DURING SYSTEM FILLING, RATE OF FLOW WILL RESTRICT FLOWRATE TO DESIRED SETPOINT. AFTER SYSTEM FILLS, THE FLOWRATE DROPS BELOW DESIRED FILL FLOWRATE AND VALVE GOES FULL OPEN.

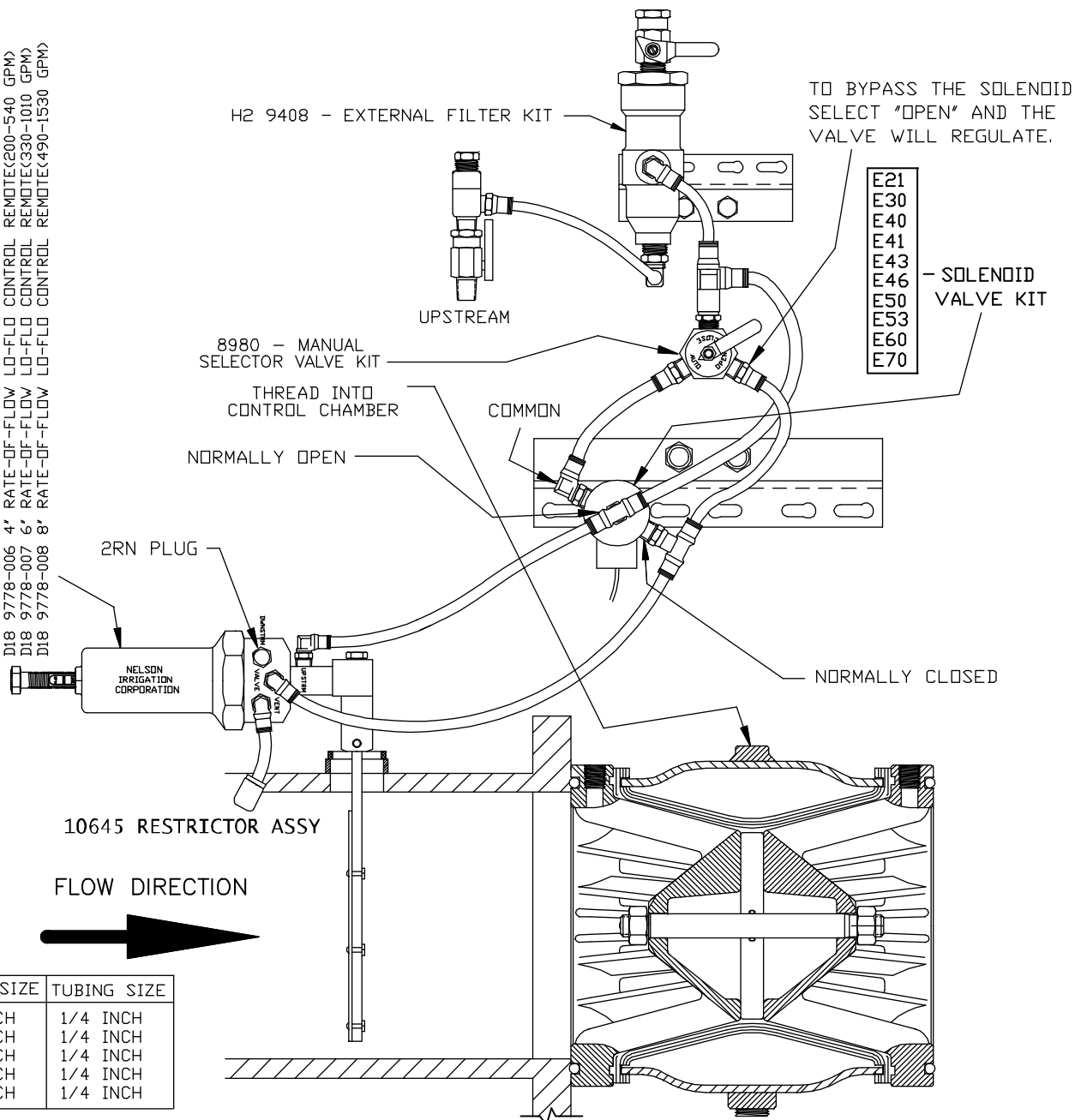
SOLENOID DE-ENERGIZED: THE VALVE WILL CLOSE.

MODEL D18

H2

- E21
- E30
- E40
- E41
- E43
- E46
- E50
- E53
- E60
- E70

- D18 9778-001 8" RATE-OF-FLOW CONTROL REMOTE(900-3800 GPM)
- D18 9778-002 8" RATE-OF-FLOW CONTROL IN-VALVE(900-3800 GPM)
- D18 9778-003 6" RATE-OF-FLOW CONTROL REMOTE(500-2000 GPM)
- D18 9778-004 6" RATE-OF-FLOW CONTROL IN-VALVE(500-2000 GPM)
- D18 9778-005 3" RATE-OF-FLOW CONTROL REMOTE(120-400 GPM)
- D18 9778-006 4" RATE-OF-FLOW CONTROL REMOTE(200-540 GPM)
- D18 9778-007 6" RATE-OF-FLOW CONTROL REMOTE(330-1010 GPM)
- D18 9778-008 8" RATE-OF-FLOW CONTROL REMOTE(490-1530 GPM)



- E21
- E30
- E40
- E41
- E43
- E46
- E50
- E53
- E60
- E70

VALVE SIZE	TUBING SIZE
2 INCH	1/4 INCH
3 INCH	1/4 INCH
4 INCH	1/4 INCH
6 INCH	1/4 INCH
8 INCH	1/4 INCH

RATE-OF-FLOW & PRESSURE REDUCING WITH SOLENOID ACTUATED HYD. RELAY & EXT. FILTER

SOLENOID ENERGIZED:

RATE-OF-FLOW CONTROL LIMITS THE FLOW RATE PASSING THROUGH THE VALVE.
 RATE-OF-FLOW CONTROL IS SET TO 110-120% ABOVE SYSTEM FLOW RATE.
 DURING SYSTEM FILLING, RATE-OF-FLOW CONTROL WILL RESTRICT FLOWRATE TO DESIRED SETPOINT. AS DOWNSTREAM PRESSURE RISES TO PRESSURE REDUCING SETTING, THE CONTROL AUTOMATICALLY SHIFTS TO PRESSURE REDUCING REGULATOR TO HOLD A CONSTANT OUTLET PRESSURE REGARDLESS OF VARYING INLET PRESSURE AND/OR CHANGING FLOW RATE.

SOLENOID DE-ENERGIZED: THE VALVE WILL CLOSE.

