

CENTER PIVOT

the original
BIG GUN®
SPRINKLER



End Gun Application

Why choose a Nelson Big Gun®

- The **Nelson name** is synonymous with the best quality available.
- **Heavy-duty construction** ensures long wear life & reliability.
- **Greatest range of options.** Full & part-circle sprinklers available in a variety of trajectory, nozzle & coating options.
- **Valve combinations available** for maximum system efficiency.
- **Easy to operate, maintain and repair** with readily available parts and documentation.

Advantages of Pivot End Guns

- Low cost for easily irrigating additional area
- Slow, steady and uniform forward and reverse drive action
- Pivot gun / control valve option doesn't require solenoid when used in conjunction with a booster pump

IT'S THE ONE FOR THE JOB

SR75



30 GPM-160 GPM
(6.8 M³/H-36.3 M³/H)

SR100



50 GPM-300 GPM
(11.4 M³/H-68.2 M³/H)

SRNV100



50 GPM-300 GPM
(11.4 M³/H-68.2 M³/H)

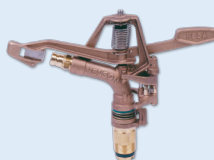
EFFECTIVE END GUN SOLUTIONS FOR EXTRA AREA

A Big Gun® sprinkler (operating through a complete rotation) on a quarter-section pivot can effectively irrigate up to 20 additional acres (8.1 ha). Considering the cost-effectiveness of putting this additional land into production, an end gun alternative shouldn't be overlooked. Even if high-pressure is not available to the end of a system, lower pressure options are available.

SR75 BIG GUN®. With proven dependability, performance, long wear life and repairability known from Big Gun® Sprinklers, the 18 degree SR75 is an affordable Big Gun option that performs well at low pressures.

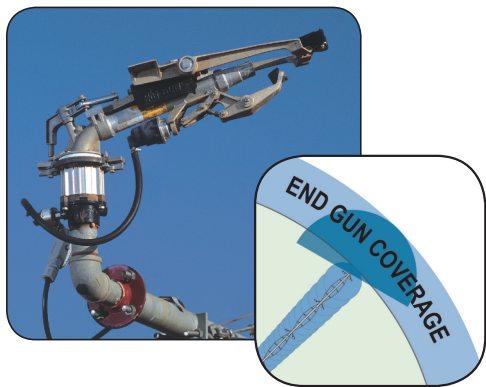
SR100 BIG GUN®. The SR100 Big Gun with an 18 degree trajectory is the most popular Pivot End Gun used on center pivots today.

SRNV100 NOZZLE VALVE. The SRNV100 is the standard SR100 Big Gun configured with a simple mechanical valve which can be either hydraulically or electrically controlled and linked to the pivot control system. Because the Nozzle Valve is externally mounted there is no friction loss, turbulence, or debris hang-up.



P85AS IMPACT. This low angle, part circle pivot end gun sprinkler has been designed to meet the demanding conditions of pivot end gun operation where the flow rate and distance of throw required is less than that of Big Gun® Sprinklers. An optional diffuser is available for low pressure systems.

BIG GUN® SPRINKLERS for Pivot End Gun Irrigation



END GUN PRODUCT COMPARISONS*

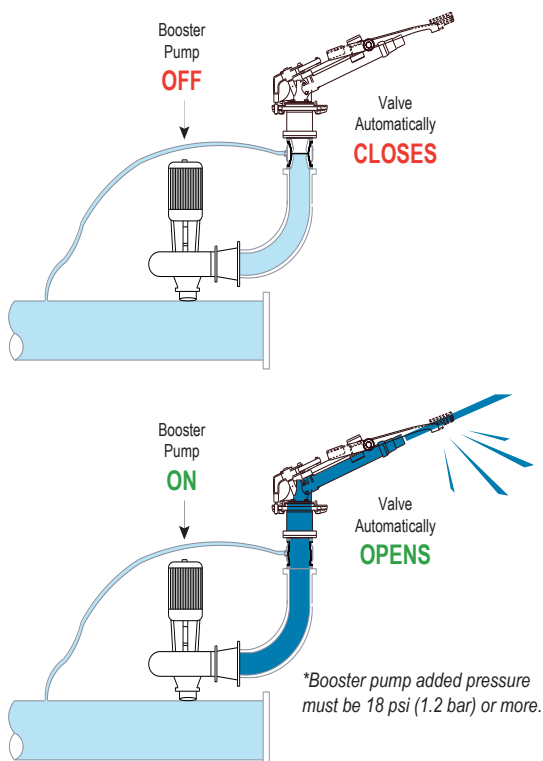
SPRINKLER	PSI RANGE	FLOW RANGE	RADIUS
BIG GUN = ~ 20 ACRES* (8 ha)	25-80 PSI (2-5.5 bar)	40-230 GPM (9-36 m³/h)	80-120 FT. (24-37 m)
P85A = 8-15 ACRES* (3-6 ha)	20-60 PSI (1.5-4 bar)	20-125 GPM (4.5-28 m³/h)	45-75 FT. (14-23 m)
Part-Circle PC3000 = 3-6 ACRES* (1-2.5 ha)	10-30 PSI (1-2 bar)	< 20 GPM (< 4.5 m³/h)	10-35 FT. (3-11 m)

* Assumes end gun is on all the time for a quarter-mile (400m) center pivot.

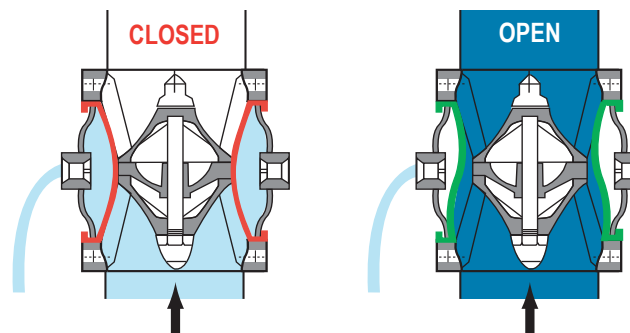
800P PIVOT GUN CONTROL VALVE

Winner of AE50 (American Society of Agricultural and Biological Engineers) 2001 Outstanding Innovations — the Pivot Gun Control Valve combines a Big Gun® Sprinkler and an 800 Series valve (A2 B7 C3). No solenoid is needed for this gun-control system (when a booster pump is used).

HOW IT WORKS: The 2" valve is normally closed. When the booster pump is turned on, the added pressure* causes the valve to open operating the gun. No other accessory is needed. The small amount of water in the sleeve chamber (about 1/2 cup) is forced back into the system. When the booster pump is turned off then the system pressure re-closes the valve.

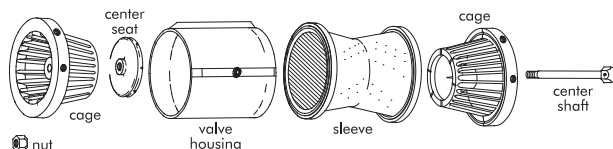


BASIC OPERATION OF VALVE



Upstream water is applied to the outer sleeve chamber, the sleeve becomes hydraulically balanced and the flow passage is closed off by the sleeve pressing against the center seat.

The added pressure from the booster pump forces the sleeve outward. Water in the sleeve chamber is evacuated back into the system and the end gun begins to operate.



WARRANTY AND DISCLAIMER: Nelson Big Gun® Sprinklers are warranted for one year from date of original sale to be free of defective materials and workmanship when used within the working specifications for which the products were designed and under normal use and service. The manufacturer assumes no responsibility for installation, removal or unauthorized repair of defective parts. The manufacturer's liability under this warranty is limited solely to replacement or repair of defective parts and the manufacturer will not be liable for any crop or other consequential damages resulting from defects or breach of warranty. THIS WARRANTY IS EXPRESSLY IN LIEU OF ALL OTHER WARRANTIES, EXPRESS OR IMPLIED, INCLUDING THE WARRANTIES OF MERCHANTABILITY AND FITNESS FOR PARTICULAR PURPOSES AND OF ALL OTHER OBLIGATIONS OR LIABILITIES OF MANUFACTURER. No agent, employee or representative of the manufacturer has authority to waive, alter or add to the provisions of this warranty, nor to make any representations or warranty not contained herein.



Nelson Irrigation Corporation

848 Airport Rd., Walla Walla, WA 99362 USA

Tel: 509.525.7660 Fax: 509.525.7907 info@nelsonirrigation.com

Nelson Irrigation Corporation of Australia Pty. Ltd.

35 Sudbury Street, Darra QLD 4074 info@nelsonirrigation.com.au

Tel: +61 7 3715 8555 Fax: +61 7 3715 8666

WWW.NELSONIRRIGATION.COM