

An aerial photograph of a center pivot irrigation system. The system consists of a long, straight metal structure with multiple support legs, stretching across a vast, dry, brown field. The field is marked with numerous parallel lines, likely from previous irrigation runs or vehicle tracks. The sky is a uniform, light brown color, suggesting a hazy or overcast day. The overall scene conveys a sense of agricultural scale and the arid environment.

NELSON IRRIGATION NEWSLETTER

MARCH 2022



YOU GET WHAT YOU INSPECT
NOT WHAT YOU EXPECT.

- RUSSEL B. NELSON AND EVERY GENERATION AFTER

**1 Year
at
Nelson**

**30
Years
in Ag.**

**Favorite Soil:
Holdrege
Loam**

This soil type is specific to his
time in Holdrege, Nebraska.

TERRITORY MANAGER SPOTLIGHT

Wihann Van Der Merwe



Van joined the Nelson team a little over a year ago. Training with Nelson territory managers Gene Ross and Clark Bauer in Nebraska before moving back to South Africa shortly after.

Van grew up in Heidelberg Western Cape, South Africa and got his first experience in Ag working on his family's farm. "I designed my own irrigation system through trial and error on vegetable seedlings that we grew. Our capacity was 5 million seedlings."

Since then he has had a variety of jobs in the Ag industry including moving to the United States to manage drip and pivots on a Kansas farm. He then moved on to become a SDI manager with a Nebraska irrigation dealer.

Now, Van is with Nelson and we are very excited to have him joining the team creating new connections with growers and dealers in Africa.

“WITH THE VISION AND KNOWLEDGE THAT OUR TEAM HAVE, FROM ENGINEERS TO THE GREAT WORK FORCE IN THE FACTORY, NELSON WILL KEEP SURPRISING THE AG WORLD WITH DURABLE & QUALITY PRODUCTS FOR EVERY APPLICATION NEEDED”



Years in Ag.

40+

Years Using
Nelson

40+

Biggest Challenges

**Plugging
Sprinklers**



FEATURED FARM: HAWMAN FARMS
HERMISTON, OREGON, USA

“WITH THE NELSON SPRINKLERS, YOU DON'T HAVE TO WORRY ABOUT THEM BEING STOPPED: THEY'RE RUNNING AND DOING THE JOB WE WANT THEM TO DO. THAT'S WHERE WE SLEEP BETTER AT NIGHT.”



"WE HAVE 240 BIRDS OUT THERE FROM PIVOT TO END; AND YEAH, IT'S A LOT, BUT IF YOU WANT TO DO A GOOD JOB YOU HAVE TO PUT THE AMOUNT OF SPRINKLERS OUT THERE TO MAKE IT WORK."

Mike Hawman has been using Nelson products for just as long as he has been farming, which is nearly 40 years. His Hermiston, Oregon based operation runs 40 pivots and primarily grows an assortment of grasses, alfalfa hay, seed corn, watermelons and potatoes using Nelson Orbitors with a Purple Plate. He feels that the shorter five-foot spacing and smaller droplets give better uniformity and protection from the wind.

Since 1982 when he first visited the Nelson facility, he has continued to be impressed and learn from the Nelson team. "It's like having a direct dial to the president. I have learned



Mike Hawman & Nelson Interns

Nelson Orbitor

Purple Plate

6 PSI

"I CAN'T SAY ENOUGH ABOUT WHAT NELSON HAS DONE FOR US, LOOKING AT THIS NEW PRODUCT AND BEING OUT HERE TO MAKE SURE IT WORKS FOR US."

a great deal from Bart, Reid and the Nelson team. It's like family. Whatever they give me, I try it. I give feedback, and I think they take what I tell them to heart, which is really important. I can't say enough about what Nelson has done for us, looking at this new product and being out here to make sure it works for us."

Hawman's biggest hope for the future is to continue to find ways to use less energy. "The big cost is the energy cost, but if we can get it into the ground and into the soil without it running off, that is important."

Favorite Product: [Nelson Orbitor](#) with the Purple Plate and 6 PSI Regulators



PRODUCT SPOTLIGHT: ARC TIMER

Years of experience and research has shown that typical hose reel travelers irrigate most uniformly when the sprinkler has an arc setting of 270°. This, however, still leaves the field edges at the beginning and end of the travel lane under-irrigated unless the user allows the sprinkler to water adjacent fields or roads, which is both wasteful and potentially dangerous.

The Nelson Automatic Arc Timer is an easy to use, set-and-go device that automatically changes the watering area as a hose reel traveler moves down a field. The user adjusts the two sets of stops as desired (at 270° and 180°, for example), then sets the timer to trip the arc change at the correct moment in the irrigation cycle.

The Arc Timer is retrofittable to any [SR150 Series Big Gun® Sprinkler](#), requires minimal use of tools and no electronics. It relies on "egg timer" simplicity and easily mounts with only two bolts.

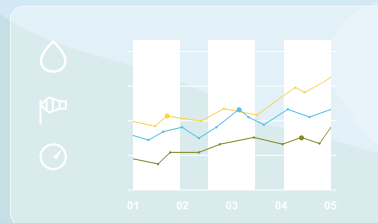
Use the [Automatic Arc Timer](#) to improve irrigation by keeping water within the bounds of the field. Save time, labor and energy while doing a better job of irrigating.

To request more information or order please [contact your Nelson Irrigation Territory Manager](#).

WIRELESS AUTOMATION FOR IRRIGATION



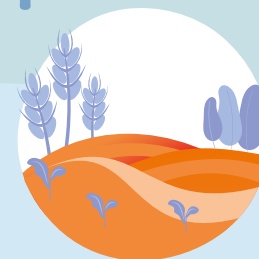
Automation allows a grower to control irrigation with a mobile device



Can manage water and bring more area into production as efficiently as possible



Easily set programs to apply just the right amount of water to crops



Cycle irrigation easily! Essential for cooling and when trying to get water into the ground on tough soils



Quickly adjust irrigation schedules to allow crews in the field



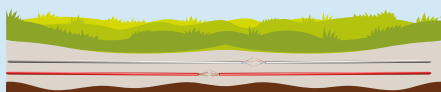
Saves time, labor, water and fertilizer costs



Check on the system remotely for peace of mind



Never worry about a lightning strike damaging the control system wire



Never worry about a broken wire underground



Irrigate day, night, and weekends without labor

[Learn more about Nelson's TWIG Wireless Automation](#)



With roots in irrigation for over 100 years,
we have been obsessive in our mission to
serve our customers with state-of-the-art
water application solutions.

848 AIRPORT ROAD
WALLA WALLA, WA 99362
UNITED STATES