



WATER APPLICATION SOLUTIONS FOR CENTER PIVOT IRRIGATION



R65 VT

R65 VT R65i VT

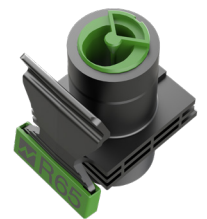
THE NEW R65 VT & INVERTED R65i VT ARE FURTHER EXTENDING NELSON'S MULTI-STREAM, END OF PIVOT SPRINKLER PERFORMANCE. WITH A NARROWER BODY AND NEW NOZZLE SYSTEM THE SPRINKLERS REACH FARTHER AND BETTER FILL IN THE WATER PATTERN.

FEATURES & BENEFITS:

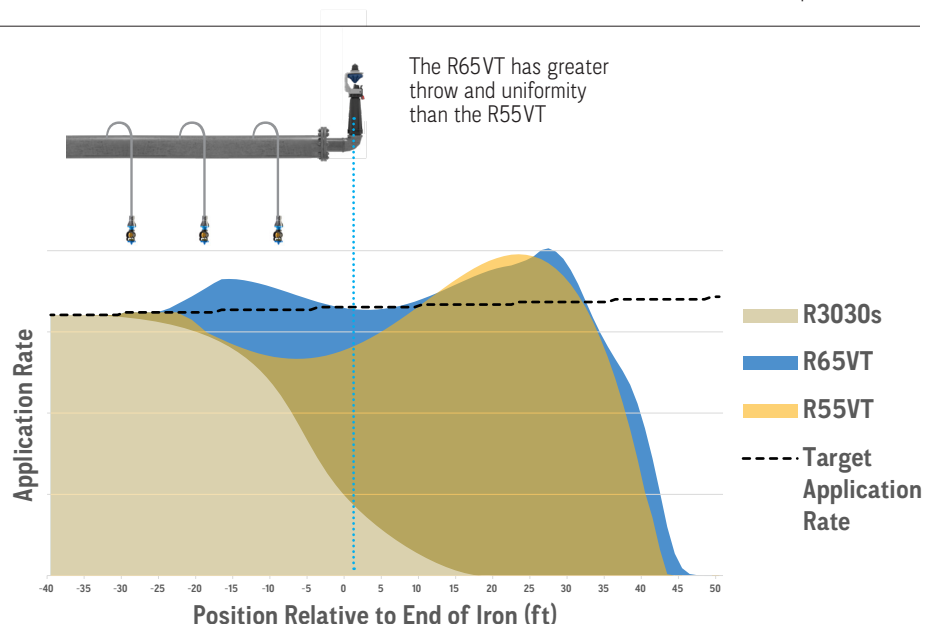
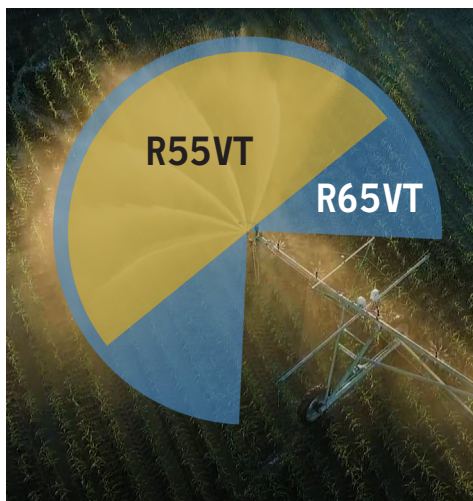
- Uses same blue/green plates (as the R55) to simplify inventory
- Focused streams increase effective radius for increased coverage
- 270 degree water pattern brings water behind sprinkler for overlap with pivot sprinklers for increased uniformity at end of iron
- Updated #90 nozzle is now compatible with the green plate



R65i VT

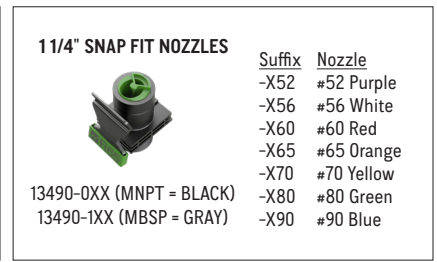
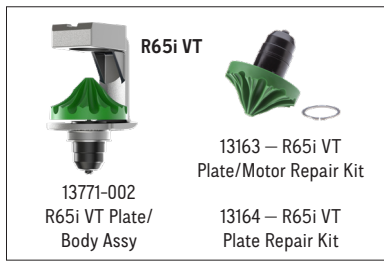
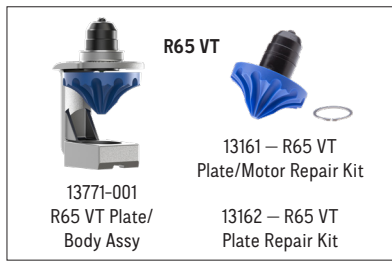


The R65 VT nozzle is shaped to provide a distribution pattern that complements the sprinklers on the iron to maximize uniformity of the traveled profile.



R65 VT

U.S. UNITS



Suffix	Nozzle
-X52	#52 Purple
-X56	#56 White
-X60	#60 Red
-X65	#65 Orange
-X70	#70 Yellow
-X80	#80 Green
-X90	#90 Blue

Pressure (psi)	*52 Purple Nozzle		*56 White Nozzle		*60 Red Nozzle		*65 Orange Nozzle		*70 Yellow Nozzle		*80 Green Nozzle		*90 Blue Nozzle	
	Flow (gpm)	Radius (ft)	Flow (gpm)	Radius (ft)	Flow (gpm)	Radius (ft)	Flow (gpm)	Radius (ft)	Flow (gpm)	Radius (ft)	Flow (gpm)	Radius (ft)	Flow (gpm)	Radius (ft)
15	19.5	41	23.6	42	27.8	42	33.2	41	36.4	40	45.2	42	52.9	40
20	22.5	44	27.3	44	32.1	44	38.4	43	42.1	42	52.2	44	61.1	43
25	25.1	47	30.6	46	36.0	47	43.0	45	47.0	45	58.3	47	68.3	46
30	27.5	49	33.6	48	39.5	49	47.1	47	51.5	47	63.9	49	74.8	48
35	29.7	51	36.3	49	42.7	51	50.9	49	55.6	48	69.0	51	80.8	50
40	31.7	52	38.9	51	45.7	52	54.5	50	59.4	50	73.8	52	86.4	51
45	33.6	53	41.3	52	48.5	53	57.8	51	63.0	51	78.3	53	91.6	51
50	35.4	53	43.6	53	51.1	54	61.0	52	66.4	52	82.5	54	96.6	52
55	37.2	53	45.7	53	53.7	54	64.0	52	69.6	53	86.5	54	101.3	51
60	38.8	53	47.8	54	56.1	54	66.9	53	72.7	53	90.4	54	105.8	51

METRIC UNITS

Pressure (bar)	*52 Purple Nozzle		*56 White Nozzle		*60 Red Nozzle		*65 Orange Nozzle		*70 Yellow Nozzle		*80 Green Nozzle		*90 Blue Nozzle	
	Flow (m³/hr)	Radius (m)	Flow (m³/hr)	Radius (m)	Flow (m³/hr)	Radius (m)	Flow (m³/hr)	Radius (m)	Flow (m³/hr)	Radius (m)	Flow (m³/hr)	Radius (m)	Flow (m³/hr)	Radius (m)
1	4.3	12.3	5.3	12.6	6.2	12.6	7.4	12.3	8.1	12.0	10.1	12.6	11.8	12.2
1.5	5.3	13.7	6.5	13.6	7.6	13.8	9.1	13.4	10.0	13.2	12.4	13.8	14.5	13.5
2	6.1	14.8	7.5	14.5	8.8	14.8	10.5	14.3	11.5	14.1	14.3	14.8	16.7	14.5
2.5	6.9	15.6	8.4	15.2	9.9	15.5	11.8	15.0	12.8	14.9	16.0	15.5	18.7	15.2
3	7.5	16.1	9.2	15.7	10.8	16.0	12.9	15.5	14.1	15.5	17.5	16.0	20.5	15.6
3.5	8.1	16.3	10.0	16.1	11.7	16.3	14.0	15.9	15.2	15.9	18.9	16.3	22.1	15.8
4	8.7	16.2	10.7	16.4	12.5	16.4	14.9	16.1	16.2	16.1	20.2	16.4	23.6	15.6

R65i VT (INVERTED)

U.S. UNITS

Pressure (psi)	*52 Purple Nozzle		*56 White Nozzle		*60 Red Nozzle		*65 Orange Nozzle		*70 Yellow Nozzle		*80 Green Nozzle		*90 Blue Nozzle	
	Flow (gpm)	Radius (ft)	Flow (gpm)	Radius (ft)	Flow (gpm)	Radius (ft)	Flow (gpm)	Radius (ft)	Flow (gpm)	Radius (ft)	Flow (gpm)	Radius (ft)	Flow (gpm)	Radius (ft)
15	19.5	39	23.6	38	27.8	37	33.2	36	36.4	36	45.2	35	52.9	33
20	22.5	41	27.3	40	32.1	40	38.4	39	42.1	39	52.2	38	61.1	36
25	25.1	43	30.6	42	36.0	42	43.0	41	47.0	41	58.3	40	68.3	39
30	27.5	44	33.6	44	39.5	43	47.1	43	51.5	43	63.9	42	74.8	41
35	29.7	45	36.3	45	42.7	45	50.9	45	55.6	44	69.0	43	80.8	42
40	31.7	46	38.9	46	45.7	46	54.5	46	59.4	45	73.8	44	86.4	43
45	33.6	47	41.3	47	48.5	47	57.8	47	63.0	46	78.3	45	91.6	44
50	35.4	47	43.6	48	51.1	48	61.0	47	66.4	47	82.5	45	96.6	44
55	37.2	47	45.7	49	53.7	49	64.0	47	69.6	47	86.5	45	101.3	44
60	38.8	47	47.8	49	56.1	49	66.9	47	72.7	47	90.4	44	105.8	44

METRIC UNITS

Pressure (bar)	*52 Purple Nozzle		*56 White Nozzle		*60 Red Nozzle		*65 Orange Nozzle		*70 Yellow Nozzle		*80 Green Nozzle		*90 Blue Nozzle	
	Flow (m³/hr)	Radius (m)	Flow (m³/hr)	Radius (m)	Flow (m³/hr)	Radius (m)	Flow (m³/hr)	Radius (m)	Flow (m³/hr)	Radius (m)	Flow (m³/hr)	Radius (m)	Flow (m³/hr)	Radius (m)
1	4.3	11.7	5.3	11.6	6.2	11.3	7.4	10.9	8.1	10.9	10.1	10.6	11.8	10.0
1.5	5.3	12.6	6.5	12.5	7.6	12.3	9.1	12.1	10.0	12.0	12.4	11.7	14.5	11.3
2	6.1	13.4	7.5	13.3	8.8	13.1	10.5	13	11.5	12.9	14.3	12.6	16.7	12.2
2.5	6.9	13.9	8.4	13.9	9.9	13.8	11.8	13.7	12.8	13.5	16.0	13.2	18.7	12.9
3	7.5	14.2	9.2	14.4	10.8	14.3	12.9	14.2	14.1	14.0	17.5	13.6	20.5	13.4
3.5	8.1	14.4	10.0	14.7	11.7	14.7	14.0	14.4	15.2	14.3	18.9	13.7	22.1	13.6
4	8.7	14.4	10.7	14.9	12.5	14.9	14.9	14.4	16.2	14.3	20.2	13.5	23.6	13.5

R65 VT & R65i VT PERFORMANCE DATA HAS BEEN OBTAINED UNDER IDEAL TEST CONDITIONS AND MAY BE ADVERSELY AFFECTED BY WIND, POOR HYDRAULIC ENTRANCE CONDITIONS OR OTHER FACTORS. TEST RISER HEIGHT OF 9 FEET (2.7 METERS) ABOVE MEASUREMENT SURFACE. NO REPRESENTATION REGARDING DROPLET CONDITION, UNIFORMITY, APPLICATION RATE, OR SUITABILITY FOR A PARTICULAR APPLICATION IS MADE HEREIN.

WARRANTY AND DISCLAIMER: Nelson End of Pivot Sprinklers are warranted for one year from date of original sale to be free of defective materials and workmanship when used within the working specifications for which the products were designed and under normal use and service. The manufacturer assumes no responsibility for installation, removal or unauthorized repair of defective parts. The manufacturer's liability under this warranty is limited solely to replacement or repair of defective parts and the manufacturer will not be liable for any crop or other consequential damages resulting from defects or breach of warranty. THIS WARRANTY IS EXPRESSLY IN LIEU OF ALL OTHER WARRANTIES, EXPRESS OR IMPLIED, INCLUDING THE WARRANTIES OF MERCHANTABILITY AND FITNESS FOR PARTICULAR PURPOSES AND OF ALL OTHER OBLIGATIONS OR LIABILITIES OF MANUFACTURER. No agent, employee or representative of the manufacturer has authority to waive, alter or add to the provisions of this warranty, nor to make any representations or warranty not contained herein.

Patent information at www.nicpat.com. Additional patents may be pending in the U.S. and/or in foreign jurisdictions.



NELSON IRRIGATION CORPORATION
848 Airport Rd., Walla Walla, WA 99362 U.S.A.
Tel: 509.525.7660 www.nelsonirrigation.com

NELSON IRRIGATION CORPORATION OF AUSTRALIA
35 Sudbury Street, Darra QLD 4074
Tel: +61 7 3715 8555 www.nelsonirrigation.com.au

NELSON IRRIGAÇÃO BRASIL LTDA.
Rua Benedita Mano Schincariol, 110 Santa Cruz, Mogi Mirim, SP 13800-443
Tel: +55 (19) 98816-4992 www.nelsonirrigation.com.br