



WIDE-AREA MICRO-IRRIGATION FOR HAZELNUTS & OTHER ORCHARD CROPS

**NEW!**

**S7 SPINNER**



## NELSON IRRIGATION'S S7 SPINNER COVERS SIGNIFICANTLY MORE AREA THAN DRIP IRRIGATION ...

- The S7 Spinner covers 75-95% of the irrigated area in orchards and the system is about the same price as a dual line drip system.
- Capillary movement of water through the soil profile starts from an area many times larger than drip irrigation.
- The S7 provides wide-area, micro-irrigation for sandy soils, sloped fields and allows for cover crops and erosion control.
- In times of drought, the S7 replaces the water where the roots are expecting it.
- Wide coverage maximizes root development and tree stability and grows larger and more productive trees.
- The S7 is a low pressure option, starting at just 15 psi for both standard and flow control nozzles.

## ADDITIONAL S7 FEATURES INCLUDE:

- Nelson's Quick Clean (QC) technology reduces irrigator hours — simply turn, flush and reconnect.
- Insect protection helps prevent plugging or stalling.
- Modular design allows quick and easy nozzle exchange.
- Optional PVC Stakes prevent tubing damage from coyotes and other animals.
- Optional tree starter (break off) deflector tabs offer flexibility.

Plate without  
Deflector Tab



Plate with  
Deflector Tab





#### 17" QC STAKE & TUBE ASSEMBLY

DESCRIPTION	Feedtube Assembly, QC, 17" Stake	Feedtube Assembly, QC, 17" Stake
PART NO.	12868-030	12868-048

#### 1/2" PVC-4 QC STAKE & TUBE ASSEMBLIES

DESCRIPTION	1/2" PVC-4 QC, 16" Stake x 4mm x 30" Tubing	1/2" PVC4 QC, 22" Stake x 4mm x 30" Tubing	1/2" PVC-4 QC, 16" Stake x 4mm x 48" Tubing
PART NO.	13090-21630	13090-22230	13090-21648

#### 1/2" PVC-5 QC STAKE & TUBE ASSEMBLIES

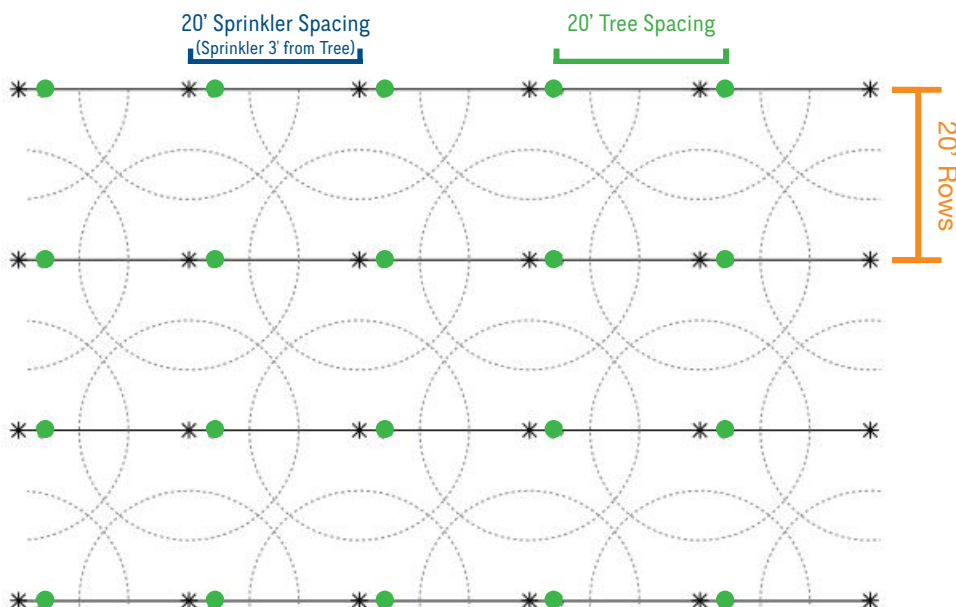
DESCRIPTION	1/2" PVC-5 QC, 16" Stake x 5mm x 30" Tubing	1/2" PVC-5 QC, 22" Stake x 5mm x 30" Tubing	1/2" PVC-5 QC, 22" Stake x 5mm x 48" Tubing
PART NO.	13089-21630	13089-22230	13089-22248

## S7 SPINNER W/ BLUE PLATE - FLOW & RADIUS (U.S. Units)

US UNITS  *NOZZLE	PRESSURE IN PSI															
	15		20		25		30		35		40		45		50	
	GPH	R (FT)	GPH	R (FT)	GPH	R (FT)	GPH	R (FT)	GPH	R (FT)	GPH	R (FT)	GPH	R (FT)	GPH	R (FT)
*35 Orange	—	—	8.7	11	10	12	11	12	12	13	13	13	13	13	14	12
*40 Blue	9.4	11	11	12	12	13	13	14	15	14	16	14	17	14	17	13
*45 Purple	12	12	14	13	16	14	17	14	19	14	20	14	21	15	22	14
*50 Green	15	12	17	14	19	15	21	15	22	15	24	15	26	15	27	14
*55 Yellow	18	13	20	14	23	15	25	15	27	15	29	15	31	16	33	15
*60 Light Red	21	13	25	14	28	15	30	16	33	16	35	16	37	16	39	16
*65 Gray	27	13	32	14	36	15	39	16	42	16	45	16	48	16	51	16
*70 White	32	13	37	15	41	15	46	16	49	16	53	16	56	16	59	16
*78 Dark Blue	41	13	47	15	53	15	58	16	63	16	67	16	71	16	75	15
8.5 Orange 7FC*	*	11	*	11	*	11	*	10	*	10	*	9	*	9	*	9
11 Blue 7FC*	*	11	*	12	*	12	*	12	*	12	*	12	*	12	*	11
14 Purple 7FC*	*	12	*	14	*	14	*	14	*	14	*	13	*	13	*	12
18 Yellow 7FC*	*	13	*	14	*	15	*	15	*	15	*	14	*	14	*	13
24 Red 7FC*	*	13	*	14	*	15	*	15	*	15	*	15	*	15	*	14

\*Call Factory for specific flow rate information.

## COMMON HAZELNUT TREE / S7 SPINNER SPACINGS



Example:

Approximate wetted diameter equals 95% coverage diameter.

8.5 7FC = 15.5 gpm/acre  
0.03"/hr application rate

11 7FC = 20 gpm/acre  
0.04"/hr application rate