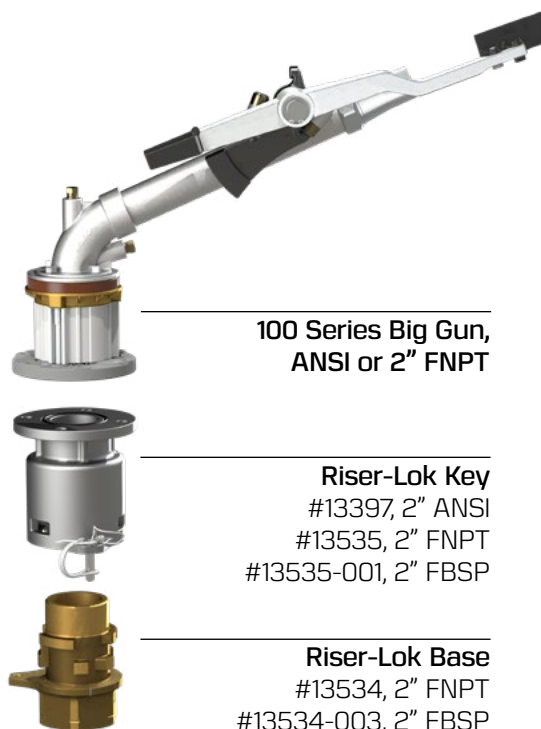


2" RISER-LOK™ BASE AND KEY

A secure, portable coupler for 100 Series Big Gun® sprinklers.



100 Series Big Gun,
ANSI or 2" FNPT

Riser-Lok Key
#13397, 2" ANSI
#13535, 2" FNPT
#13535-001, 2" FBSP

Riser-Lok Base
#13534, 2" FNPT
#13534-003, 2" FBSP



FEATURES:

- Patented Riser-Lok™ connection geometry prevents coupler from unexpectedly separating under pressure
- Includes wire-lock pin to secure key to base
- Lightweight aluminum (gold anodized base)
- 2" FNPT/FBSP inlet (base) x 2" ANSI compatible flange or 2" FNPT/FBSP outlet (key)

APPLICATIONS:

- Designed specifically for portable/removable 100 Series Big Gun® sprinklers.
- Safer and easier alternative to cam-lock or ring-lock style couplers.
- Economical alternative to a QC Valve/Key system.

INSTALLATION

1. Mount the key to a 100 Series Big Gun® sprinkler. For a sprinkler and key with **ANSI compatible flange connection**, use four 1/2" bolts (supplied by others). For **threaded connection**, install a 2" nipple (max length 12") between the key and the sprinkler; use anti-seize on the threads to prevent galling.
2. The key slides over the base by aligning the locking pin with the notch in the base, then rotating into place (see **Fig. 1**). Use the wire-lock pin to secure the key to the base.

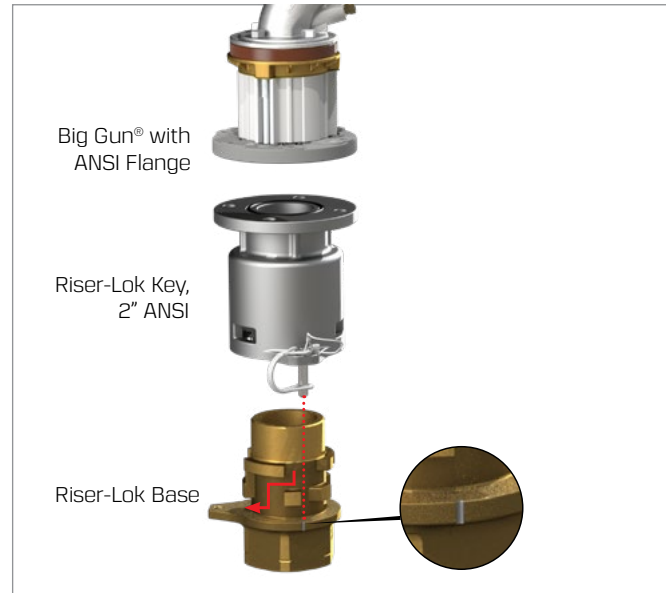


Fig. 1. BGC Key mounting to BGC Base.

RISER DESIGN

Examples of standard riser detail drawings are shown in **Fig. 2 and 3**. The Riser-Lok coupler system typically works best with a manual isolation valve below the base. When installing the coupler in a valve box, ensure adequate clearance above ground for the sprinkler drive arm to swing freely (maximum allowable extension between key and sprinkler is 12"). A portable, wireless, automatic system can be created by installing a Nelson valve and TWIG® wireless radio between the key and the sprinkler.

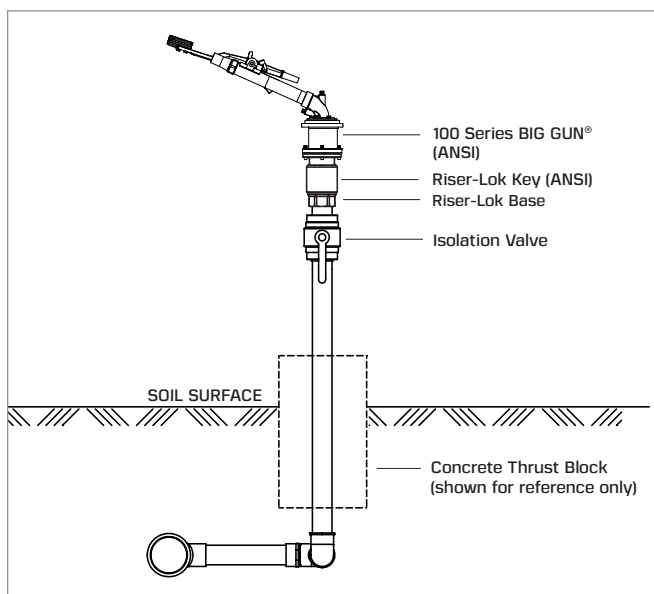


Fig. 2. Riser-Lok key direct-mounted to sprinkler.

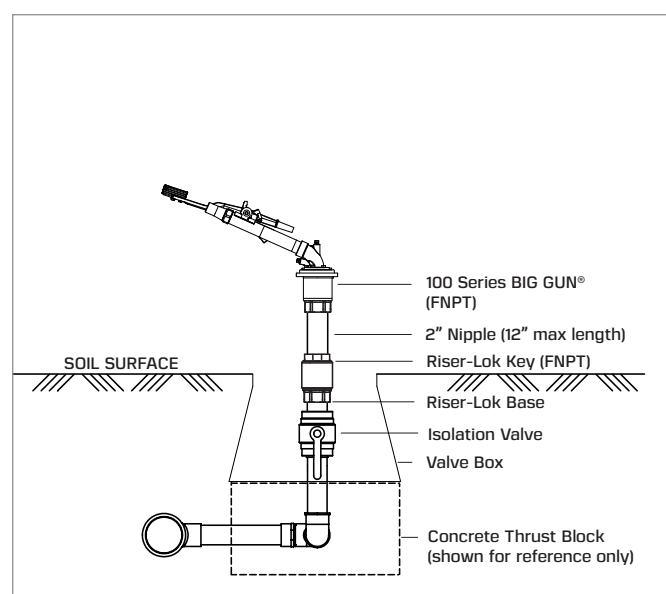
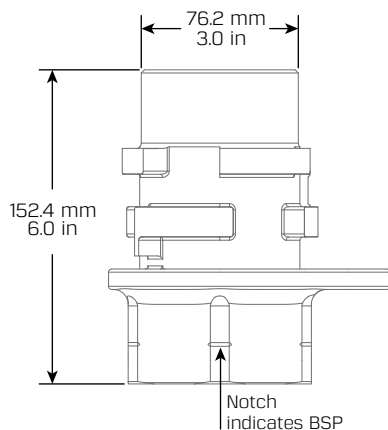


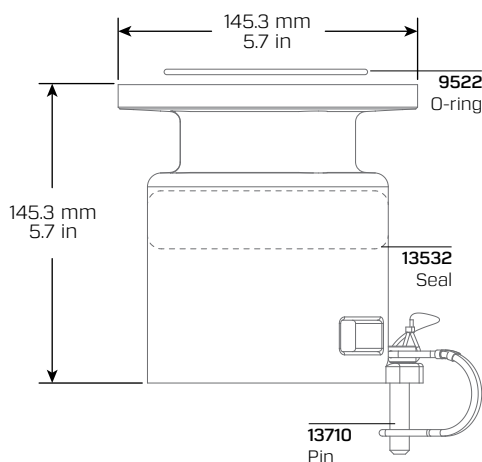
Fig. 3. Riser-Lok coupler installed in valve box, with extension between key and sprinkler.

PARTS AND DIMENSIONS

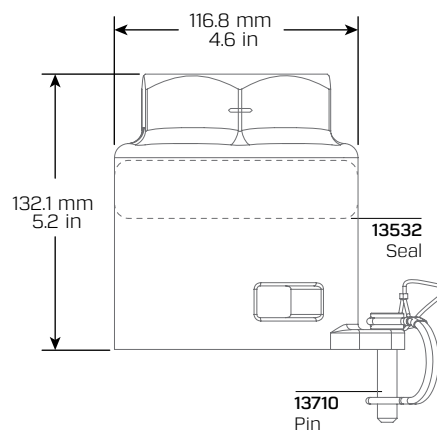
Riser-Lok Base, Threaded
 #13534, 2" FNPT
 #13534-003, 2" FBSP



Riser-Lok Key Assembly
 #13397, 2" ANSI

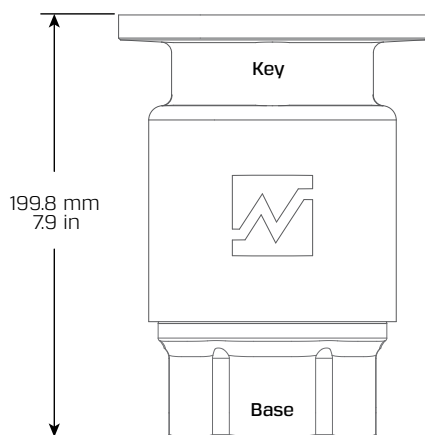


Riser-Lok Key Assembly
 #13535, 2" FNPT
 #13535-001, 2" FBSP

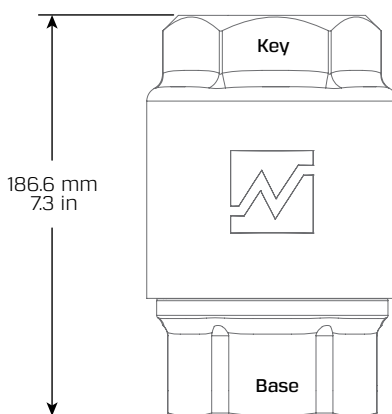


ASSEMBLED DIMENSIONS

Riser-Lok Key (ANSI)
 Mounted to Base



Riser-Lok Key (Threaded)
 Mounted to Base



WARRANTY AND DISCLAIMER: Nelson Big Gun® Sprinklers and accessories are warranted for one year from date of original sale to be free of defective materials and workmanship when used within the working specifications for which the products were designed and under normal use and service. The manufacturer assumes no responsibility for installation, removal or unauthorized repair of defective parts. The manufacturer's liability under this warranty is limited solely to replacement or repair of defective parts and the manufacturer will not be liable for any crop or other consequential damages resulting from defects or breach of warranty. THIS WARRANTY IS EXPRESSLY IN LIEU OF ALL OTHER WARRANTIES, EXPRESS OR IMPLIED, INCLUDING THE WARRANTIES OF MERCHANTABILITY AND FITNESS FOR PARTICULAR PURPOSES AND OF ALL OTHER OBLIGATIONS OR LIABILITIES OF MANUFACTURER. No agent, employee or representative of the manufacturer has authority to waive, alter or add to the provisions of this warranty, nor to make any representations or warranty not contained herein. Products in this brochure may be covered by one or more U.S. Patents and other U.S. Patents pending or corresponding issued or pending foreign patents. See www.nicpat.com for details.